

15
year guarantee



INDIVIDUAL

by VADO

AT **VADO**, WE
CELEBRATE
GOOD DESIGN.

**WE DELIVER
INNOVATION.**



CONTENTS

WHY VADO?

2 DISTINCTIVE.

4 STYLISH.

6 INDIVIDUAL.

9 BRUSHED BLACK

Edit

Notion

Origins

Elements

Sensori SmartDial

Wastes & Fittings

Showering

Accessories

25 BRUSHED GOLD

Edit

Notion

Origins

Elements

Sensori SmartDial

Wastes & Fittings

Showering

Accessories

41 BRUSHED NICKEL

Edit

Notion

Origins

Elements

Sensori SmartDial

Wastes & Fittings

Showering

Accessories

57 BRIGHT GOLD

Edit

Notion

Origins

Elements

Sensori SmartDial

Wastes & Fittings

Showering

Accessories



WHY VADO?

As experts in the brassware industry, we pride ourselves on creating outstanding products that will revitalise your bathroom experience.

15 YEAR GUARANTEE.



With our leading 15 year guarantee, you can complete your look with confidence.

AQUA ARMOUR.



Aqua Armour is a state-of-the-art coating, designed by VADO, to provide a durable, long-lasting finish.

SAVE WATER. SAVE THE ENVIRONMENT.



We all aspire to protect the environment and with VADO you can. Our H2Eco flow regulators ensure you can use less water without hampering performance or design.

See www.vado.com/watersaving for more information.



DISTINCTIVE.

Adjective

Characteristic of one person or thing, and so serving to distinguish it from others.



DISCOVER YOUR IDENTITY.

Our four timeless finishes have been tailored to inspire your individual style. Creating a contemporary look that will stand the test of time.

BRITISH DESIGNED & ENGINEERED.



Individual has been expertly designed and engineered in Cheddar, England; the home of our brand for over 30 years.

THE PERFECT CHOICE.

Our products are compatible with standard bathroom basins, baths and all household plumbing systems. Throughout this brochure, you can find which products work best with a low, medium and high water pressure system.

LP (Low Pressure, 0.2 - 0.5 bar)

MP (Medium Pressure, 1 - 1.5 bar)

HP (High Pressure, 3 bar +)

STYLISH.

Adjective

Of a high quality in appearance, design, or behaviour.



GET YOUR LOOK TODAY.

Don't want to wait weeks to create your individual look?
Don't worry. All our finishes are stocked and ready to order.



Find your local verified VADO independent retailer at
vado.com/stockists and begin your Individual journey.

A GLOBALLY TRUSTED BRAND.

Don't just take our word for it. VADO's prestigious project
history speaks for itself.

- Marine Wharf, London
- One Angel Square, Manchester
- Hilton Park Lane, London
- Marriott Royal Hotel, Bristol
- Montevetro Building, Dublin
- El Pacha Hotel, Ibiza
- Al Manshar Rotana Hotel, Kuwait
- Ocean 2 Hotel, Barbados
- Sheraton Hotel, Warsaw
- Marriott Hotel, Baku
- Angaga Island Resort, Maldives
- Chedi Hotel, Oman
- Intercontinental Resort, Mauritius
- Eastern & Oriental Hotel, Malaysia

Burj Khalifa, Dubai, UAE

JW Marriott Marquis, Dubai, UAE

The Shard,
London, UK

Deansgate Square, Manchester, UK

Peckforton Castle, Cheshire, UK

Central Market, Abu Dhabi, UAE



INDIVIDUAL.

Adjective

Existing and considered separately from the other things or people in a group.



- BLK

**BRUSHED
BLACK**

**DEFINED.
BOLD.
EXPRESSIVE.**

Distinct in character. Striking in design.

Brushed black enables freedom of expression.

Transforming the ordinary into extraordinary.



BE INSPIRED

An expert choice for the monochrome interior. Brushed black forms an idyllic balance between the artistic and the simplistic. A versatile finish that uses its neutral complexion to unite any chosen colour scheme. Evoking timeless sophistication through a rich, darkened tone.

A dynamic finish with durability at its core. Brushed black's smooth, refined surface contrasts a unique, textural presence. Establishing an authentic urban appeal.

BLK



Mono
Basin Mixer

IND-EDI100/SB-BLK

MP



Tablet 2 Outlet
Thermostatic Valve
All-Flow
IND-T148/2-ALT-BLK



EDIT



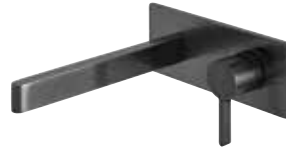
Mono
Basin Mixer

IND-EDI100/SB-BLK



Extended Mono
Basin Mixer

IND-EDI100E/SB-BLK



Wall Mounted
Basin Mixer

IND-EDI109S/A-BLK

MP

MP

MP

BLK



Tablet 3 Outlet
Thermostatic Valve
All-Flow

IND-T128/3-H-ALT-BLK



Tablet 2 Outlet
Thermostatic Valve
All-Flow

IND-T148/2-ALT-BLK

LP

LP



Manual Valve
+ Diverter

IND-EDI147A-BLK

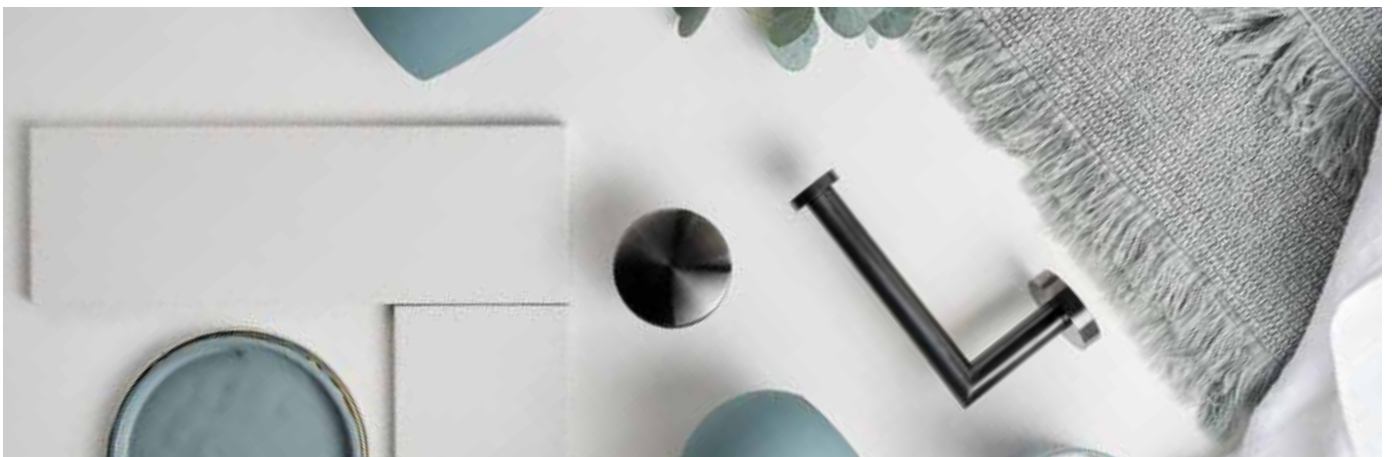


Manual Valve

IND-EDI145A-BLK

LP

LP



NOTION



Mono
Basin Mixer

IND-NOT200/SB-BLK



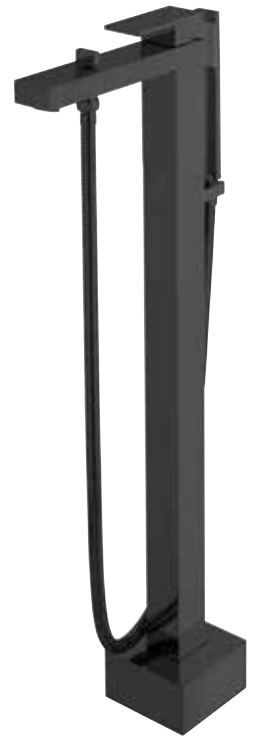
Wall Mounted
Basin Mixer

MP **IND-NOT109S/A-BLK**



Manual Valve
+ Diverter

LP **IND-NOT147A-BLK**



LP



Tablet 3 Outlet
Thermostatic Valve
All-Flow

IND-T128/3-H-NOT-BLK



Tablet 2 Outlet
Thermostatic Valve
All-Flow

LP **IND-T148/2-NOT-BLK**



Manual Valve

LP **IND-NOT145A-BLK**

Floor Standing
Bath Shower Mixer
+ Shower Kit

LP **IND-NOT233-BLK**

HP



ORIGINS



Mono
Basin Mixer

IND-ORI200/SB-BLK



Wall Mounted
Basin Mixer

MP IND-ORI109S/A-BLK



Manual Valve
+ Diverter

LP IND-ORI147A-BLK



LP

BLK



Tablet 3 Outlet
Thermostatic Valve
All-Flow

IND-T128/3-H-ALT-BLK



Tablet 2 Outlet
Thermostatic Valve
All-Flow

LP IND-T148/2-ALT-BLK



Manual Valve

LP IND-ORI145A-BLK

Floor Standing
Bath Shower Mixer
+ Shower Kit

LP IND-ORI233-BLK

HP



ELEMENTS



Mono
Basin Mixer

IND-ELW100/SB-BLK

LP



Basin Mixer
+ Pop-Up Waste

IND-ELW101-BLK

LP



Wall Mounted
Basin Mixer

IND-ELW109L-BLK

LP



DX 2 Outlet
Thermostatic Valve

IND-ELE148D/2-BLK

LP



SENSORI SMARTDIAL

The innovative solution for your contemporary home.

Simple, stylish and sophisticated. The Sensori SmartDial embraces digital innovation to reinvent your bathroom experience and offer full control at your fingertips.

Sensori's purity of design is accentuated by discreet, ambient lighting in a spectrum of colours to denote your perfect temperature.

SENSORI
SMARTDIAL

 For further information visit www.vado.com/sensori

BLK



Sensori SmartDial
Dual Outlet
Shower/Bath Control
IND-DIA2700-BLK

- ✓ Temperature and flow control
- ✓ For use with two outlets
- ✓ Outlet diversion button
- ✓ Automatic bath-fill



Sensori SmartDial
Single Outlet Control
IND-DIA1000-BLK

- ✓ Temperature control
- ✓ For use with one outlet



Sensori SmartDial
Dual Outlet
Shower Control
IND-DIA2000-BLK

- ✓ Temperature and flow control
- ✓ For use with two outlets
- ✓ Outlet diversion button



Sensori SmartDial
Start/Stop Remote
IND-DIA-REMOTE-BLK

- ✓ Start/Stop functionality



WASTES & FITTINGS



Infra-Red Spout
Mains or
AA Battery Operated
IND-IRWSPOUT-BLK



Universal
Basin Waste
IND-395-BLK



Square Waste Cap*
IND-395CAP/SQ-BLK



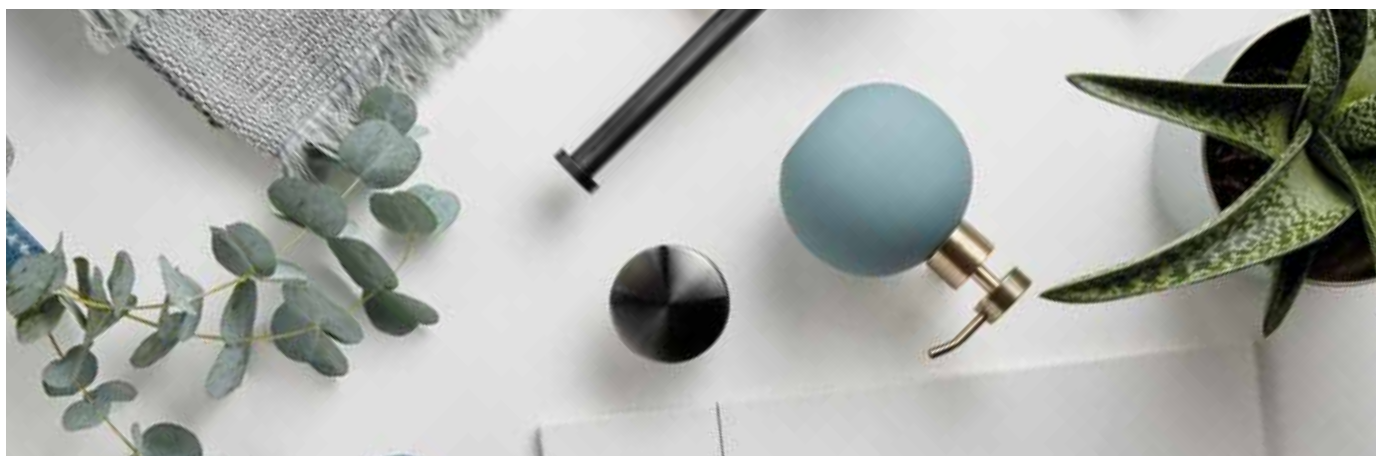
Contemporary Bottle Trap
1.1/4" x 1.1/4"
IND-461/UK-1.1/4-BLK



Push Type
Bath Filler Waste
+ Overflow
IND-81389/R0-BLK



Pop-Up
Bath Waste
+ Overflow
IND-71552A/R0-BLK



*Suitable for universal basin waste

SHOWERING ROUND



Slide Rail Shower Kit

IND-SFSRK/RO-BLK



Easy Fit Shower Arm

IND-EFSA/RO-BLK



Shower Head
300mm (12") Diameter

IND-RO/30-BLK

MP



Wall Outlet

LP IND-OUTLET/RO-BLK



Mini Shower Kit
with Integrated Outlet

IND-SFMKW0/RO-BLK



Ceiling Mounted Arm
100mm (4")

LP IND-CMA/RO/4IN-BLK



SHOWERING SQUARE



Slide Rail Shower Kit*

IND-SFSRK/SQ-BLK



Easy Fit Shower Arm

IND-EFSA/SQ-BLK



Shower Head
300mm (12")

IND-SQ/30-BLK

MP



Wall Outlet

IND-OUTLET/SQ-BLK

LP



Mini Shower Kit
with Integrated Outlet

IND-SFMKW0/SQ-BLK

LP



*Adjustable fixing for easy retro-fit

ACCESSORIES ROUND



Paper Holder

IND-SPA180-BLK



Grab Rail
300mm (12")

IND-SPA1801-30-BLK



Towel Rail
450mm (18")

IND-SPA184-45-BLK



Towel Shelf with Rail
600mm (24")

IND-SPA185B-BLK



Robe Hook

IND-SPA186-BLK



BLK

ACCESSORIES SQUARE



Paper Holder

IND-SHA180-BLK



Towel Rail
450mm (18")

IND-SHA184-45-BLK



Robe Hook

IND-SHA186-BLK



BRUSHED GOLD

— BRG

**AUTHENTIC.
SUBTLE.
UNDERSTATED.**

Blissfully unassuming.

Brushed gold captures the essence of perfection.

Liberating design through reclaimed elegance.



BE INSPIRED

Designed to inspire a sense of luxury. Brushed gold revitalises contemporary forms with an understated, antique hue. Its rich and radiant allure embracing a purity in design. Creating voguish décor with a vintage disposition.



Robe Hook

IND-SHA186-BRG

BRG



Harmonising minimal design schemes with a subtle, textured guise. Brushed gold's warm, rustic aesthetic radiates a luring, atmospheric charm. An authentic finish with natural charisma.



Wall Mounted
Basin Mixer

IND-EDI109S/A-BRG

MP

EDIT



Mono
Basin Mixer

IND-EDI100/SB-BRG



Extended Mono
Basin Mixer

IND-EDI100E/SB-BRG



Wall Mounted
Basin Mixer

IND-EDI109S/A-BRG

MP

MP

MP

BRG



Tablet 3 Outlet
Thermostatic Valve
All-Flow

IND-T128/3-H-ALT-BRG



Tablet 2 Outlet
Thermostatic Valve
All-Flow

IND-T148/2-ALT-BRG

LP

LP



Manual Valve
+ Diverter

IND-EDI147A-BRG



Manual Valve

IND-EDI145A-BRG

LP

LP



NOTION



Mono
Basin Mixer

IND-NOT200/SB-BRG



Wall Mounted
Basin Mixer

IND-NOT109S/A-BRG



Manual Valve
+ Diverter

IND-NOT147A-BRG



Floor Standing
Bath Shower Mixer
+ Shower Kit

IND-NOT233-BRG



Tablet 3 Outlet
Thermostatic Valve
All-Flow

IND-T128/3-H-NOT-BRG



Tablet 2 Outlet
Thermostatic Valve
All-Flow

IND-T148/2-NOT-BRG



Manual Valve

IND-NOT145A-BRG



ORIGINS



Mono
Basin Mixer

IND-ORI200/SB-BRG



Wall Mounted
Basin Mixer

IND-ORI109S/A-BRG



Manual Valve
+ Diverter

IND-ORI147A-BRG



Floor Standing
Bath Shower Mixer
+ Shower Kit

IND-ORI233-BRG



Tablet 3 Outlet
Thermostatic Valve
All-Flow

IND-T128/3-H-ALT-BRG



Tablet 2 Outlet
Thermostatic Valve
All-Flow

IND-T148/2-ALT-BRG



Manual Valve

IND-ORI145A-BRG

BRG



ELEMENTS



Mono
Basin Mixer

IND-ELW100/SB-BRG

LP



Basin Mixer
+ Pop-Up Waste

IND-ELW101-BRG

LP



Wall Mounted
Basin Mixer

IND-ELW109L-BRG

LP



DX 2 Outlet
Thermostatic Valve

IND-ELE148D/2-BRG

LP



SENSORI SMARTDIAL

The innovative solution for your contemporary home.

Simple, stylish and sophisticated. The Sensori SmartDial embraces digital innovation to reinvent your bathroom experience and offer full control at your fingertips.

Sensori's purity of design is accentuated by discreet, ambient lighting in a spectrum of colours to denote your perfect temperature.

SENSORI
SMARTDIAL

 For further information visit www.vado.com/sensori

BRG



Sensori SmartDial
Dual Outlet
Shower/Bath Control
IND-DIA2700-BRG

- ✓ Temperature and flow control
- ✓ For use with two outlets
- ✓ Outlet diversion button
- ✓ Automatic bath-fill



Sensori SmartDial
Single Outlet Control
IND-DIA1000-BRG

- ✓ Temperature control
- ✓ For use with one outlet



Sensori SmartDial
Dual Outlet
Shower Control
IND-DIA2000-BRG

- ✓ Temperature and flow control
- ✓ For use with two outlets
- ✓ Outlet diversion button



Sensori SmartDial
Start/Stop Remote
IND-DIA-REMOTE-BRG

- ✓ Start/Stop functionality



WASTES & FITTINGS



Infra-Red Spout
Mains or
AA Battery Operated
IND-IRWSPOUT-BRG



Universal
Basin Waste
IND-395-BRG



Square Waste Cap*
IND-395CAP/SQ-BRG



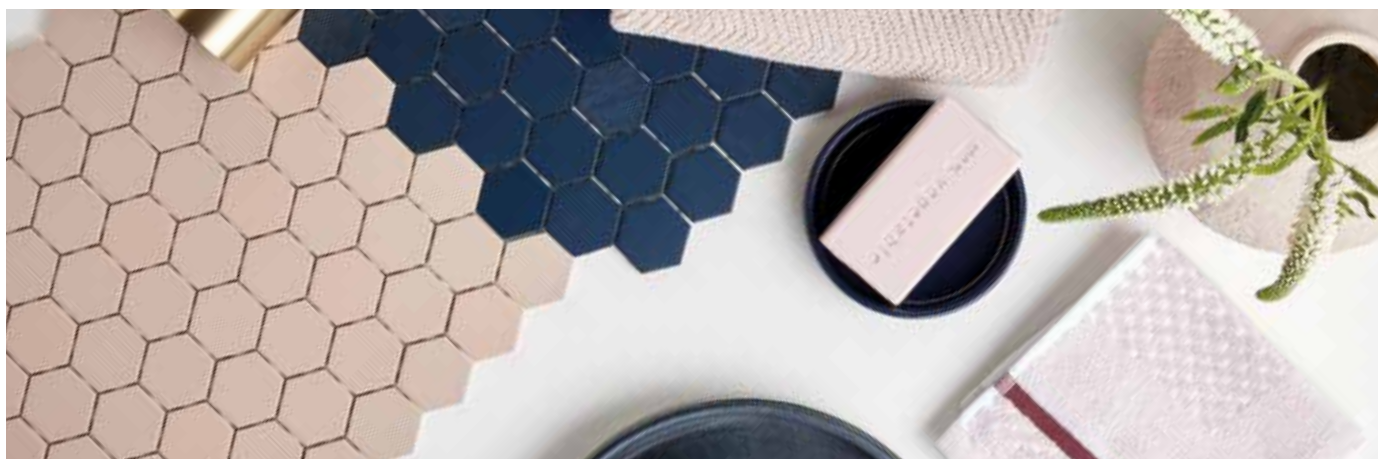
Round
Contemporary Bottle Trap
1.1/4" x 1.1/4"
IND-461/UK-1.1/4-BRG



Push Type
Bath Filler Waste
+ Overflow
IND-81389/R0-BRG



Pop-Up
Bath Waste
+ Overflow
IND-71552A/R0-BRG



*Suitable for universal basin waste

SHOWERING ROUND



Slide Rail Shower Kit

IND-SFSRK/RO-BRG



Easy Fit Shower Arm

IND-EFSA/RO-BRG



Shower Head
300mm (12") Diameter

IND-RO/30-BRG

MP



Wall Outlet

LP IND-OUTLET/RO-BRG



Mini Shower Kit
with Integrated Outlet

IND-SFMKWO/RO-BRG



Ceiling Mounted Arm
100mm (4")

LP IND-CMA/RO/4IN-BRG



SHOWERING SQUARE



Slide Rail Shower Kit*

IND-SFSRK/SQ-BRG



Easy Fit Shower Arm

IND-EFSA/SQ-BRG



Shower Head
300mm (12")

IND-SQ/30-BRG

MP



Wall Outlet

IND-OUTLET/SQ-BRG

LP



Mini Shower Kit
with Integrated Outlet

IND-SFMKW0/SQ-BRG

LP



*Adjustable fixing for easy retro-fit

ACCESSORIES ROUND



Paper Holder

IND-SPA180-BRG



Grab Rail
300mm (12")

IND-SPA1801-30-BRG



Towel Rail
450mm (18")

IND-SPA184-45-BRG



Towel Shelf with Rail
600mm (24")

IND-SPA185B-BRG



Robe Hook

IND-SPA186-BRG



BRG

ACCESSORIES SQUARE



Paper Holder

IND-SHA180-BRG



Towel Rail
450mm (18")

IND-SHA184-45-BRG



Robe Hook

IND-SHA186-BRG



— BRN

BRUSHED NICKEL

RAW. URBAN. INDUSTRIAL.

A specialist in self-expression.

Brushed nickel defines industrial purity.

The foundation to an urban oasis.



BE INSPIRED



Wall Mounted
Basin Mixer

IND-ELW109L-BRN

LP



Progressive in contemporary design. Brushed nickel echoes architectural brilliance. Its soft, brushed finish accentuates an unrelenting urban charm; unearthing a modish paradigm of manufactured bravura.

Domesticating the exposed aesthetic. Brushed nickel's unique, textured surface expertly complements concrete basins and pared back interiors. Its weathered look and feel reasserts a desirable industrial edge. Turning imperfection into perfection.





Grab or Towel Rail
300mm (12")

IND-SPA1801-30-BRN



EDIT



Mono
Basin Mixer

IND-EDI100/SB-BRN



Extended Mono
Basin Mixer

IND-EDI100E/SB-BRN



Wall Mounted
Basin Mixer

IND-EDI109S/A-BRN

MP

MP

MP

BRN



Tablet 3 Outlet
Thermostatic Valve
All-Flow

IND-T128/3-H-ALT-BRN



Tablet 2 Outlet
Thermostatic Valve
All-Flow

IND-T148/2-ALT-BRN

LP

LP



Manual Valve
+ Diverter

IND-EDI147A-BRN



Manual Valve

IND-EDI145A-BRN

LP

LP



NOTION



Mono
Basin Mixer

IND-NOT200/SB-BRN



Wall Mounted
Basin Mixer

IND-NOT109S/A-BRN



Manual Valve
+ Diverter

IND-NOT147A-BRN



Floor Standing
Bath Shower Mixer
+ Shower Kit

IND-NOT233-BRN



Tablet 3 Outlet
Thermostatic Valve
All-Flow

IND-T128/3-H-NOT-BRN



Tablet 2 Outlet
Thermostatic Valve
All-Flow

IND-T148/2-NOT-BRN



Manual Valve

IND-NOT145A-BRN



* LP for shower, MP for bath – for more information on Tablet valves visit www.vado.com/tablet

ORIGINS



Mono
Basin Mixer

IND-ORI200/SB-BRN



Wall Mounted
Basin Mixer

IND-ORI109S/A-BRN



Manual Valve
+ Diverter

IND-ORI147A-BRN



Floor Standing
Bath Shower Mixer
+ Shower Kit

IND-ORI233-BRN



Tablet 3 Outlet
Thermostatic Valve
All-Flow

IND-T128/3-H-ALT-BRN



Tablet 2 Outlet
Thermostatic Valve
All-Flow

IND-T148/2-ALT-BRN



Manual Valve

IND-ORI145A-BRN

BRN



ELEMENTS



Mono
Basin Mixer

IND-ELW100/SB-BRN

LP



Basin Mixer
+ Pop-Up Waste

IND-ELW101-BRN

LP



Wall Mounted
Basin Mixer

IND-ELW109L-BRN

LP



DX 2 Outlet
Thermostatic Valve

IND-ELE148D/2-BRN

LP



SENSORI SMARTDIAL

The innovative solution for your contemporary home.

Simple, stylish and sophisticated. The Sensori SmartDial embraces digital innovation to reinvent your bathroom experience and offer full control at your fingertips.

Sensori's purity of design is accentuated by discreet, ambient lighting in a spectrum of colours to denote your perfect temperature.

SENSORI
SMARTDIAL

 For further information visit www.vado.com/sensori

BRN



Sensori SmartDial
Dual Outlet
Shower/Bath Control
IND-DIA2700-BRN

- ✓ Temperature and flow control
- ✓ For use with two outlets
- ✓ Outlet diversion button
- ✓ Automatic bath-fill



Sensori SmartDial
Single Outlet Control
IND-DIA1000-BRN

- ✓ Temperature control
- ✓ For use with one outlet



Sensori SmartDial
Dual Outlet
Shower Control
IND-DIA2000-BRN

- ✓ Temperature and flow control
- ✓ For use with two outlets
- ✓ Outlet diversion button



Sensori SmartDial
Start/Stop Remote
IND-DIA-REMOTE-BRN

- ✓ Start/Stop functionality



WASTES & FITTINGS



Infra-Red Spout
Mains or
AA Battery Operated
IND-IRWSPOUT-BRN



Universal
Basin Waste
IND-395-BRN



Square Waste Cap*
IND-395CAP/SQ-BRN



Contemporary Bottle Trap
1.1/4" x 1.1/4"
IND-461/UK-1.1/4-BRN



Push Type
Bath Filler Waste
+ Overflow
IND-81389/R0-BRN



Pop-Up
Bath Waste
+ Overflow
IND-71552A/R0-BRN



*Suitable for universal basin waste

SHOWERING ROUND



Slide Rail Shower Kit

IND-SFSRK/RO-BRN



Easy Fit Shower Arm

IND-EFSA/RO-BRN



Shower Head
300mm (12") Diameter

IND-RO/30-BRN

MP



Wall Outlet

LP IND-OUTLET/RO-BRN



Mini Shower Kit
with Integrated Outlet

IND-SFMKW/RO-BRN



Ceiling Mounted Arm
100mm (4")

LP IND-CMA/RO/4IN-BRN



SHOWERING SQUARE



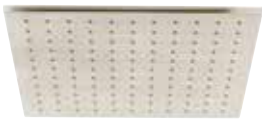
Slide Rail Shower Kit*

IND-SFSRK/SQ-BRN



Easy Fit Shower Arm

IND-EFSA/SQ-BRN



Shower Head
300mm (12")

IND-SQ/30-BRN

MP



Wall Outlet

LP

IND-OUTLET/SQ-BRN



Mini Shower Kit
with Integrated Outlet

IND-SFMKW0/SQ-BRN

LP



*Adjustable fixing for easy retro-fit

ACCESSORIES ROUND



Paper Holder

IND-SPA180-BRN



Grab Rail
300mm (12")

IND-SPA1801-30-BRN



Towel Rail
450mm (18")

IND-SPA184-45-BRN



Towel Shelf with Rail
600mm (24")

IND-SPA185B-BRN



Robe Hook

IND-SPA186-BRN



BRN

ACCESSORIES SQUARE



Paper Holder

IND-SHA180-BRN



Towel Rail
450mm (18")

IND-SHA184-45-BRN



Robe Hook

IND-SHA186-BRN



— **BG**

**BRIGHT
GOLD**

**DARING.
OPULENT.
SOPHISTICATED.**

Inspiring indulgence.

Bright gold is a masterpiece of design.

A distinguished vision of luxury.



BE INSPIRED

A sophisticated alternative to an all-chrome aesthetic. Bright gold's dignified demeanour accentuates both elegance and luxury. Complementing stylish, spa-like settings and period style décor. An alluring finish whose cultured, metallic gleam bestows an everlasting appeal.



Floor Standing
Bath Shower Mixer
+ Shower Kit
IND-OR1233-BG

HP

An assured infusion of colour for the minimalist interior. Or a striking extension to your daring design. Bright gold embodies individuality. An expression of majestic lustre. A statement of grandeur.





Grab or Towel Rail
300mm (12")

IND-SPA1801-30-BG



EDIT



Mono
Basin Mixer

IND-EDI100/SB-BG



Extended Mono
Basin Mixer

MP **IND-EDI100E/SB-BG**



Wall Mounted
Basin Mixer

MP **IND-EDI109S/A-BG** **MP**



Tablet 3 Outlet
Thermostatic Valve
All-Flow

IND-T128/3-H-ALT-BG



Tablet 2 Outlet
Thermostatic Valve
All-Flow

LP **IND-T148/2-ALT-BG**



Manual Valve
+ Diverter

LP **IND-EDI147A-BG**



Manual Valve

LP **IND-EDI145A-BG** **LP**

BG



NOTION



Mono
Basin Mixer

IND-NOT200/SB-BG



Wall Mounted
Basin Mixer

MP **IND-NOT109S/A-BG**



Manual Valve
+ Diverter

LP **IND-NOT147A-BG**



LP



Tablet 3 Outlet
Thermostatic Valve
All-Flow

IND-T128/3-H-NOT-BG



Tablet 2 Outlet
Thermostatic Valve
All-Flow

LP **IND-T148/2-NOT-BG**



Manual Valve

LP **IND-NOT145A-BG**

Floor Standing
Bath Shower Mixer
+ Shower Kit

LP **IND-NOT233-BG**

HP



ORIGINS



Mono
Basin Mixer

IND-ORI200/SB-BG



Wall Mounted
Basin Mixer

MP IND-ORI109S/A-BG



Manual Valve
+ Diverter

LP IND-ORI147A-BG



LP*



Tablet 3 Outlet
Thermostatic Valve
All-Flow

IND-T128/3-H-ALT-BG



Tablet 2 Outlet
Thermostatic Valve
All-Flow

LP* IND-T148/2-ALT-BG



Manual Valve

LP* IND-ORI145A-BG

Floor Standing
Bath Shower Mixer
+ Shower Kit

LP* IND-ORI233-BG

HP

. BG



ELEMENTS



Mono
Basin Mixer

IND-ELW100/SB-BG

LP



Basin Mixer
+ Pop-Up Waste

IND-ELW101-BG

LP



Wall Mounted
Basin Mixer

IND-ELW109L-BG

LP



DX 2 Outlet
Thermostatic Valve

IND-ELE148D/2-BG

LP



SENSORI SMARTDIAL

The innovative solution for your contemporary home.

Simple, stylish and sophisticated. The Sensori SmartDial embraces digital innovation to reinvent your bathroom experience and offer full control at your fingertips.

Sensori's purity of design is accentuated by discreet, ambient lighting in a spectrum of colours to denote your perfect temperature.

SENSORI
SMARTDIAL

 For further information visit www.vado.com/sensori

BG



Sensori SmartDial
Dual Outlet
Shower/Bath Control
IND-DIA2700-BG

- ✓ Temperature and flow control
- ✓ For use with two outlets
- ✓ Outlet diversion button
- ✓ Automatic bath-fill



Sensori SmartDial
Single Outlet Control
IND-DIA1000-BG

- ✓ Temperature control
- ✓ For use with one outlet



Sensori SmartDial
Dual Outlet
Shower Control
IND-DIA2000-BG

- ✓ Temperature and flow control
- ✓ For use with two outlets
- ✓ Outlet diversion button



Sensori SmartDial
Start/Stop Remote
IND-DIA-REMOTE-BG

- ✓ Start/Stop functionality



WASTES & FITTINGS



Infra-Red Spout
Mains or
AA Battery Operated

IND-IRWSPOUT-BG



Universal
Basin Waste

MP IND-395-BG



Square Waste Cap*

IND-395CAP/SQ-BG



Contemporary Bottle Trap
1.1/4" x 1.1/4"

IND-461/UK-1.1/4-BG



Push Type
Bath Filler Waste
+ Overflow

IND-81389/RO-BG



Pop-Up
Bath Waste
+ Overflow

MP IND-71552A/RO-BG



*Suitable for universal basin waste

SHOWERING ROUND



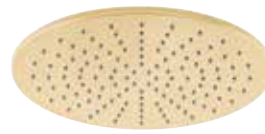
Slide Rail Shower Kit

IND-SFSRK/RO-BG



Easy Fit Shower Arm

IND-EFSA/RO-BG



Shower Head
300mm (12") Diameter

IND-RO/30-BG

MP



Wall Outlet

LP **IND-OUTLET/RO-BG**



Mini Shower Kit
with Integrated Outlet

IND-SFMKW0/RO-BG



Ceiling Mounted Arm
100mm (4")

LP **IND-CMA/RO/4IN-BG**



SHOWERING SQUARE



Slide Rail Shower Kit*

IND-SFSRK/SQ-BG



Easy Fit Shower Arm

IND-EFSA/SQ-BG



Shower Head
300mm (12")

IND-SQ/30-BG

MP



Wall Outlet

LP

IND-OUTLET/SQ-BG



Mini Shower Kit
with Integrated Outlet

IND-SFMKW0/SQ-BG

LP



*Adjustable fixing for easy retro-fit

ACCESSORIES ROUND



Paper Holder

IND-SPA180-BG



Grab Rail
300mm (12")

IND-SPA1801-30-BG



Towel Rail
450mm (18")

IND-SPA184-45-BG



Towel Shelf with Rail
600mm (24")

IND-SPA185B-BG



Robe Hook

IND-SPA186-BG



Please note item pictured is brushed gold.

ACCESSORIES SQUARE



Paper Holder

IND-SHA180-BG



Towel Rail
450mm (18")

IND-SHA184-45-BG



Robe Hook

IND-SHA186-BG



GUARANTEE

All VADO products come with a 2 year guarantee as standard. Within this guarantee period VADO will provide replacement parts and any labour [SEE NOTE 1] needed to complete the product repair.

This standard guarantee may be extended by registering your product to give up to a 15 year guarantee period. Once registered:

Brassware products from the Individual by VADO collection have a 15 year guarantee (2 years parts and labour plus 13 years parts only).

VADO chromed brassware and stainless steel products have a 12 year guarantee (2 years parts and labour plus 10 years parts only).

VADO Sensori SmartTouch and SmartDial products have a 5 year guarantee (parts and labour).

VADO Identity and i-tech products have a 5 year guarantee (2 year parts and labour plus 3 years parts only).

All other VADO products have a 3 year guarantee (2 years parts and labour plus 1 year parts only) [SEE NOTE 2].

VADO electric showers have a 2 years parts and labour guarantee.

GUARANTEE CONDITIONS

Our products are guaranteed against manufacturing defects from the date of purchase until the expiry of the relevant guarantee period shown above.

The guarantee is only valid if:

1. The product has been installed, used and maintained (maintenance guidelines can be viewed here) in accordance with VADO's instructions and subjected to normal use only.
2. The defect is not due to use of an unsuitable or inadequate water or power supply.
3. The defect is not due to accident, misuse, neglect or incorrect/inappropriate repair (other than by VADO or VADO authorised agents) or damage caused by foreign objects or substances.
4. The extended guarantee is only available if you have completed the Guarantee Registration Process. This can be done via the VADO website or via phone to our aftersales team. Registration must be completed within 6 months from date of purchase.

Under the extended guarantee period VADO will, at its option, offer to supply any replacement product (or component part) assessed to be defective [SEE NOTE 3].

The guarantee (whether standard or extended) is non-transferable to any subsequent owner.

All claims under the guarantee should be notified in the first instance to our Aftersales department, contact details below, this must be done no later than the last day of the relevant guarantee period. All claims must be accompanied by proof of purchase (sales receipt or delivery note) from an official VADO dealer.

The guarantee does not extend to any consequential loss or damage.

After repair or replacement, the relevant guarantee period will be calculated from the original date of purchase.

VADO operates a policy of continuous product development and therefore reserves the right to change the product, packaging and documentation specifications without notice.

NOTES:

[1] Labour via our engineer network is only available in the UK. Attendance by a VADO engineer or sub-contract engineer will be under our standard terms and conditions.

[2] VADO spare parts and shower hoses are under a parts only guarantee.

[3] VADO reserves the right to charge in advance for a product (or replacement part) pending collection and investigation (at VADO expense) to confirm a defect is due to a manufacturing issue. If a defect is found the charge will be refunded or cancelled. This guarantee is in addition to and does not affect your statutory rights as a consumer.

CLAIMS:

Tel: 01934 745163

Email: aftersales@vado.com

GUARANTEE REGISTRATION:

Tel: 01934 315699

Email: guarantee@vado.com





T&C'S

TERMS & CONDITIONS

DEFINITIONS

In these conditions 'the Company' shall mean VADO, a division of Norrcros (Holdings) Limited, 'the purchaser' shall mean the person, firm or company to whom any quotation is addressed or with whom any contract is made and 'the goods' shall mean the goods and/or services agreed to be sold by the Company to the purchaser.

1. QUOTATION AND ACCEPTANCE

- (a) All quotations are given and all orders are accepted on these terms which shall apply to the exclusion of and shall override any other terms stipulated or referred to by the purchaser whether in its order or any other document, or in any negotiations or communication or course of dealing established between the Company and the purchaser;
- (b) No modification or amendment of these terms or addition thereto shall be effective unless made in writing and signed by a director of the Company.

2. DESCRIPTION OF AND STATEMENTS AS TO GOODS

- (a) Save where the goods are stated to be sold as complying with a recognised trade or industry standard, all descriptions, specifications, drawings and particulars of weights and dimensions submitted by the Company or otherwise contained in the Company's catalogues, brochures, price lists, quotations and publicity materials are approximate only and the Company shall not be liable for their accuracy unless they are expressly incorporated into the contract in writing;
- (b) These terms represent the entire agreement between the Company and the purchaser relating to the goods and such terms supersede and the purchaser shall not place any reliance upon any statements, recommendations and advice whether oral or in writing given (whether before or after the acceptance by the Company of the purchaser's order) by the Company, its servants or agents as to any matter relating to the goods save where such statement, recommendations or advice is given in writing and signed by a director of the Company in response to a specific written request from the purchaser before or at the time of the Company's acceptance of the order.

3. PRICES

- Prices quoted by the Company are those in effect at the date of quotation. Unless otherwise agreed in writing, the Company reserves the right to increase prices when it accepts the purchaser's order so as to reflect one or more of the following:
- (a) any variation that may have occurred in the costs of labour, materials, suppliers overheads and transport;
 - (b) any change in duty, tax, surcharge or levy of any kind whatsoever affecting the sale price of the goods;
 - (c) any cost to the Company resulting from delay by the purchaser in giving to the Company information sufficient to enable it to supply the goods or provide the services or resulting from any alteration made at the request of the purchaser in the specification of the goods or in the place to which they are to be delivered or shipped;
 - (d) any extra cost to the Company resulting from the goods being carried at the request of the purchaser by mode of transport more expensive than the Company's normal form of transport.

4. PAYMENT

- (a) Unless otherwise agreed in writing, the price for the goods will be due and payable on the last business day of the month following delivery;
- (b) The Company shall be entitled to charge interest on any part of the price which is not paid in accordance with clause (a) at the rate per annum of 3% above the Base Rate of Lloyds Banking Group from time to time;
- (c) Time of payment is of the essence and if the purchaser defaults in punctual payment of the price the Company shall be entitled to terminate the contract and recover the goods at the purchaser's expense without prejudice to any further rights which the Company may have;
- (d) Any default in payment of an invoice or an instalment payment on an invoice on the due date shall render the entire balance outstanding on all invoices from the Company to the purchaser immediately payable in full without demand being made notwithstanding any contrary provisions as to terms of payment in any one or all invoices;
- (e) If the purchaser fails to give all instructions reasonably required by the Company and all necessary document, licences, consents and authorities for forwarding the goods or is unable to accept delivery of the goods at the time when the goods are due and ready for despatch or delivery or shall otherwise cause or request delay, the purchaser shall pay to the Company all costs and expenses, including storage and insurance charges incurred or arising from such delay during which, at the Company's absolute discretion if its storage facilities permit, the goods will be stored at the purchaser's sole risk. This provision shall be in addition to and not in substitution for any other payment or damages for which the purchaser may be liable in respect of his failure to take delivery at the appropriate date;
- (f) The purchaser shall not be entitled to make any deduction from the price of goods which have been delivered to the purchaser in respect of any set off or counterclaim unless both the validity and the amount thereof have been expressly admitted in writing by the Company and such admission is signed by a director of the Company;

- (g) In the absence of any specific appropriation by the purchaser, the Company shall have the right to appropriate any payment made by the purchaser towards the satisfaction of any invoice outstanding from time to time as the Company shall in its absolute discretion think fit.

5. DELIVERY

- (a) Any time or date stated for delivery is given and intended as an estimate only and the Company shall not be liable for any loss or damage whatsoever resulting from any delay in delivery howsoever arising;
- (b) Unless otherwise stated in writing delivery shall be deemed to take place upon the occurrence of the first in time of the following, namely:
- the physical delivery of the goods to the purchaser at the Company's works;
 - the physical delivery of the goods to the purchaser's carrier or agent for the purpose of transmission to the purchaser or his nominee;
 - the physical delivery of the goods to the purchaser's place of business or such other place as he may direct by the Company, its carrier or agent, the purchaser being responsible for unloading;
- (c) Signature of the Company's delivery note by any employee, representative or agent of the purchaser shall be conclusive proof of delivery;
- (d) Where the contract provides for delivery by the Company, its carrier or agent:
- any claims for non-delivery must be made in writing to the Company within three days of receipt of invoice or advice note whichever is the earlier;
 - any claims in respect of goods damaged in transit or shortages in delivery must be made in writing to the Company within three days of delivery; shortages in delivery shall not give rise to a right to reject the goods delivered;
- (e) The Company shall be entitled to make partial deliveries or deliveries by instalments and all the provisions of these terms shall apply to such deliveries;

6. PROPERTY AND RISK

- (a) Risk in the goods shall pass to the purchaser at the time at which delivery takes place in accordance with clause 5 above and the purchaser shall be solely responsible for insuring the goods thereafter;
- (b) The Company shall retain ownership of and title in the goods delivered until full payment has been made in respect of all such goods. Until such time the goods shall be:
- stored separately from other goods in the possession of the purchaser;
 - marked or otherwise rendered identifiable as being the property of the Company;
 - held by the purchaser as bailee of the Company;
 - held by the purchaser free from any charge, lien or other encumbrance;
- (c) Provided the Company has not requested their return and notwithstanding that payment in full has not been made for all of the goods delivered, the purchaser as principal and not as agent for the Company shall be entitled to use the goods or offer for sale and sell them in the ordinary course of his business;
- (d) Where the purchaser sells the goods prior to paying for them in full:
- the Company shall be legally and beneficially entitled to the proceeds of sale;
 - the purchaser shall hold the proceeds of sale on trust for the Company and shall not mingle them with other monies and shall not pay them into an overdrawn bank account;
 - he shall deposit the proceeds of sale in a separate bank account, the location and number of which he has previously notified to the Company, and he shall not be entitled to use or deal with the proceeds of sale until payment in full for the goods has been made to the Company;
- (e) The Company shall have the right at any time by its servants or agents to enter the purchaser's premises where the goods are stored, or are thought the Company to be stored, so as to:
- retake possession of the goods when the Company has requested their return and the purchaser has not immediately complied with the request, such retaking or return to be without prejudice to any other rights the Company may have arising therefrom;
 - inspect the storage of the Company's goods which have not been paid for in full;
 - investigate and ascertain whether all these terms are being complied with;

7. GUARANTEE AND LIABILITY

- (a) The Company guarantees all goods which have been manufactured by the Company against any defect of work or materials which can be proved to the Company's satisfaction to have been caused before delivery provided that:
- the goods are used for their normal purpose,
 - full details of any such defect are notified to the Company within thirty days of its first appearance and the goods in which the defect arises are returned at the purchaser's expense to the Company;
- (b) The guarantee shall be for a period of twelve years from the date of delivery for all product except pumps which are 3 years for Monsoon and 1 year for Showermate and products with any other finish that is not chrome, such as gold, which are guaranteed for 3 years. The liability of the Company shall be limited at its option either to supply replacement goods, which will be supplied subject to these terms, or refunding of the goods;
- (c) The Company gives no guarantee in respect of goods not manufactured by it but shall use all reasonable endeavours to procure for the purchaser or assign to the purchaser the benefit of any guarantee obtained by it from the manufacturer or supplier thereof; however the Company shall not be required to commence litigation against such manufacturer or supplier or to incur any expense in connection with

any such claim by the purchaser;

- (d) The above guarantee is given in lieu of and to the exclusion of all other warranties, conditions, representations and undertakings express or implied by statute or otherwise in respect of the quality or fitness for purpose of the goods or as to their condition or performance or as to any other matter except where such warranty or condition is implied by statute and by reason of a statutory provision, cannot be excluded;
- (e) Save as provided herein and save in any case where death or personal injury has been caused by the Company's negligence or any case where the Company is liable for a defect in the goods pursuant to Part 1 of the Consumer Protection Act 1987 or any statutory replacement thereof, the Company shall be under no liability whatsoever to the purchaser for any loss or damage whether direct, indirect or consequential arising out of any defect in, failure of or unsuitability for any purpose of the goods or any part thereof whether the same be due to any act, omission, breach of contract, negligence or wilful default in design, workmanship or materials or any other cause.

8. INDEMNITY AS TO INDUSTRIAL PROPERTY RIGHTS

- (a) The purchaser shall indemnify the Company against all loss, damages, costs and expenses suffered or incurred by the Company or to which the Company may become liable as a result of any work carried out in accordance with the purchaser's specification(s) which involves infringement or alleged infringement of a patent, registered design or other industrial property right;
- (b) If the purchaser uses or sells the goods in such a manner as to infringe any such rights the company shall not be responsible for such infringement and the purchaser agrees to indemnify the Company from and against all liability arising therefrom.

9. TERMINATION

- The Company shall have the right forthwith to cancel the purchaser's order if any of the following events occur and subject to enforcement of the Company's rights to recover the goods and to receive payment of the price or damages, the contract shall be deemed to have terminated:
- the purchaser commits any breach of its obligations to the Company;
 - any distress or execution is levied upon any property of the purchaser;
 - the purchaser makes or offers to make any arrangement or composition with creditors or commits any act of bankruptcy or insolvency;
 - any resolution is passed or petition presented to wind up the purchaser;
 - a receiver or administrator is appointed or any chargee takes possession of all or any part of the undertaking or assets of the purchaser;
 - the purchaser stops payment or ceases or threatens to cease to carry on its business or to pay its debts as and when they fall due;
 - any remittance for payment of the whole or any part of the purchase price of the goods is dishonoured by the purchaser's bankers.

10. ASSIGNMENT

- The purchaser shall not assign or transfer or purport to assign or transfer any contract to which these terms apply to any other person without the Company's prior written consent. The Company reserves the right to subcontract the performance of the contract or any part of it.

11. FORCE MAJEURE

- If the Company is prevented or delayed [directly or indirectly] from making delivery of the goods or any part thereof or from otherwise performing the contract or any part thereof by reason of war, embargo, riot, strike, lock-out, trade dispute, fire, breakdown of plant or machinery, inclement weather, interruption of transport, Government action, delay in delivery to the Company of any goods or materials, or by any cause whatsoever [whether or not of a like nature to the foregoing] outside its control, it shall be under no liability whatsoever to the purchaser and shall be entitled at its option either to cancel the contract or without any liability to extend the time or times for delivery by a period equivalent to that during which such delivery has been prevented.

12. PROPER LAW

- The contract and these terms shall be governed by English law and the purchaser shall submit to the sole jurisdiction of the English Courts.

EXPERIENCE OUR PRODUCTS IN **FULL 3D.**

STEP 1: **DOWNLOAD**

VIV is available to download for free on the App Store and Google Play Store and works with all iOS and Android devices.

STEP 2: **SCAN**

Using the **VIV** App, scan the tracker to generate life size **VADO** products in 3D.

STEP 3: **EXPERIENCE**

Prepare for an enriched digital experience as you bring your favourite **VADO** ranges to life.



WHERE INSPIRATION FLOWS



VADO
Wedmore Road Cheddar Somerset England BS27 3EB
tel +44 (0)1934 745160
fax +44 (0)1934 745161
www.vado.com
export@vado.com



due to our policy of continual improvement, VADO reserve the right to change product specification.
the colours indicated are an approximation of the actual finishes on VADO products. e&oe.
©2019 VADO LIT-VADO/EXPO-IND19

