

WHERE INSPIRATION FLOWS



EXPORT SHOWERING PACKAGES **2019**

VADO

CONTACT US

SALES +44 (0)1934 745160

FAX +44 (0)1934 745161

EMAIL EXPORT@VADO.COM

WEB WWW.VADO.COM



CONTENTS

6 **WHY VADO?**

10 **THE RIGHT SHOWER FOR YOUR SYSTEM**

16 **UNDERSTANDING THERMOSTATIC TECHNOLOGY**

CONCEALED SHOWER VALVE PACKAGES

18 2 OUTLET, 3 HANDLE VALVE PACKAGES



20 2 OUTLET, 2 HANDLE VALVE PACKAGES



34 1 OUTLET, 2 HANDLE VALVE PACKAGES



RIGID RISERS AND SHOWER COLUMNS

41 RIGID RISER AND SHOWER VALVE PACKAGES



43 SHOWER COLUMNS



53 **EXPOSED SHOWER VALVE PACKAGES**



60 **BASKETS**



62 **ELECTRIC SHOWERS**





EXPERIENCE OUR PRODUCTS IN FULL 3D.

STEP 1: DOWNLOAD

VIV is available to download for free on the App Store and Google Play Store and works with all iOS and Android devices.

STEP 2: SCAN

Using the **VIV** App, scan the tracker to generate life size **VADO** products in 3D.

STEP 3: EXPERIENCE

Prepare for an enriched digital experience as you bring your favourite **VADO** ranges to life.



THIS TRACKER IS THE
START OF A WHOLE
NEW EXPERIENCE IN
VIRTUAL INSPIRATION



YOU ARE IN SAFE HANDS.



WHY VADO?

We don't compromise on our design or manufacturing – superior quality taps, showers and accessories are our passion. From product design to our seven step hand polishing process, we manufacture our products to last, so whichever range you choose, outstanding quality comes as standard.

VADO products are expertly designed in Cheddar, England, the home of our brand for the last three decades. We are experts in the brassware industry and take a pride in our heritage and values. We ensure only the finest materials are crafted into products that not only look premium, they feel it too.



H2ECO

VADO has a renowned reputation for creating products that deliver the best possible user experience, yet use water sustainably. With **VADO** H2Eco flow regulators you can be assured that you can use less water without hampering your product's performance or design.* Save water in style with **VADO**.

We all aspire to do what we can to help protect the environment. By fitting **VADO** H2Eco flow regulators to your taps and showers, you can help reduce your carbon footprint.

SAVE WATER
SAVE MONEY
SAVE THE
PLANET.

THE PERFECT CHOICE FOR YOUR HOME.

We understand there are a lot of choices to make when searching for your perfect kitchen or bathroom fittings, with an overwhelming amount of confusing information and advice available.

At **VADO** we don't think it needs to be that complicated. We think all you need to know is that when you choose a **VADO** product, you are getting the very best of British design and exceptional quality.

- 12 year guarantee
- Tested to industry leading standards
- Friendly and knowledgeable customer service team
- A product you will love using every day

†



CHOOSING YOUR SHOWER

This collection of one code thermostatic shower packages allows for easy selection, taking the hassle out of choosing a shower. Our wide range of products offer a variety of functions and features perfectly suited to your needs, including:

- Large choice of contemporary and traditional styles
- Concealed and exposed shower options
- Thermostatic systems for safety and ease of use
- Shower columns for an easy-to-install complete system
- Multi-function handsets to personalise each showering experience
- Large choice of single or multiple outlet products
- Concealed valves include fittings for both 1/2" and 3/4" pipework

All of our products are designed to be compatible with standard shower enclosures and baths and work in conjunction with all household plumbing systems.



THE RIGHT SHOWER FOR YOUR SYSTEM

In order to choose a showering product that will work at its optimum performance to deliver the experience you expect, simply identify the type of plumbing system that is installed in your home and contact your plumber to check your pressure(s).

SYSTEM 1

If your system is gravity fed, you will typically find a hot water cylinder in the airing cupboard and a cold water tank in the loft.

If you are running this system without a pump you can choose any shower with the **LP** symbol.

SYSTEM 2

Combination boilers, usually located in the kitchen, instantly heat mains fed cold water and therefore do not require storage tanks.

For this system, you can choose any shower with the **MP** symbol.

Shower systems suitable for gravity fed installations can also be used with combination boilers.

SYSTEM 3

If your system is an unvented cylinder, a hot water cylinder will usually be located in the airing cupboard with a pressure vessel on top.

For this system, you can choose any shower with the **HP** symbol.

Shower systems suitable for gravity fed and combi boilers can also be used on a high pressure system.

SYSTEM 4

For this system, a booster pump will draw water from a hot water cylinder in the airing cupboard and a cold water tank in the loft.

For gravity fed systems the booster pump will enhance water pressure.

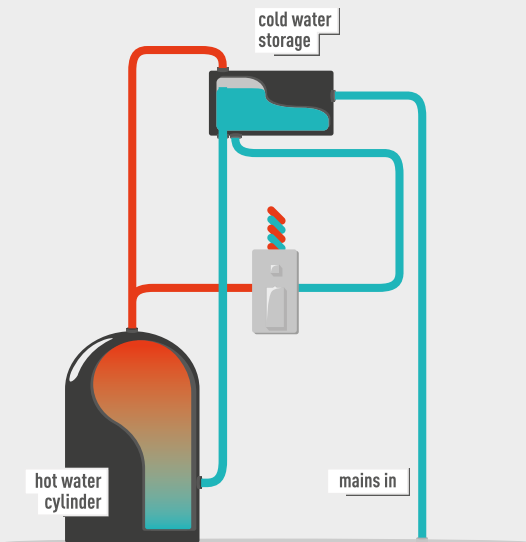
For this system, you can choose any shower with the **HP** symbol.

†



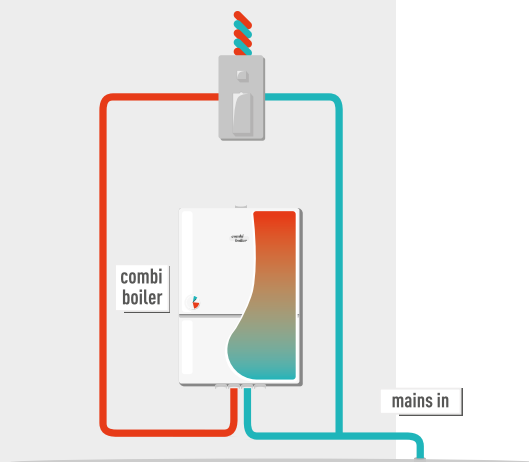
1. GRAVITY LP

Low Pressure, 0.2 - 0.5 bar



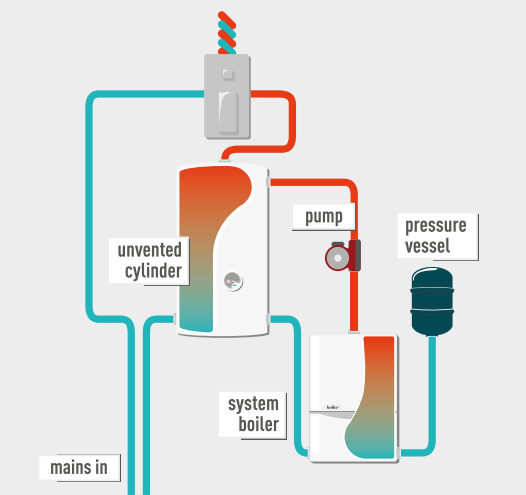
2. COMBI MP

Medium Pressure, 1 - 1.5 bar



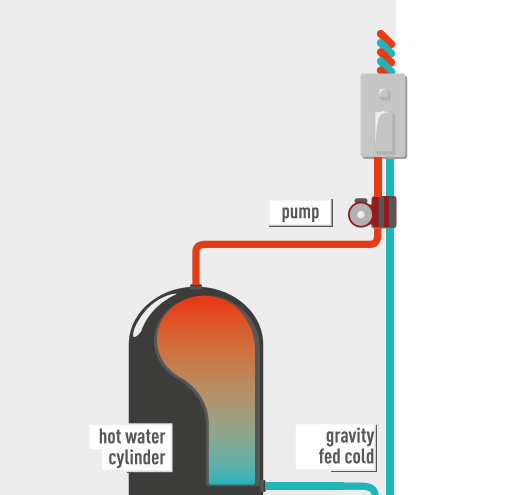
3. PRESSURISED HP

High Pressure, 3.0 bar



4. PUMPED HP

High Pressure, 3.0 bar



DON'T JUST TAKE OUR WORD FOR IT.

VADO products are in some of the most prestigious hotel, commercial and residential developments across the world. This cityscape shows a small snapshot of a variety of prestigious projects we have been involved with.

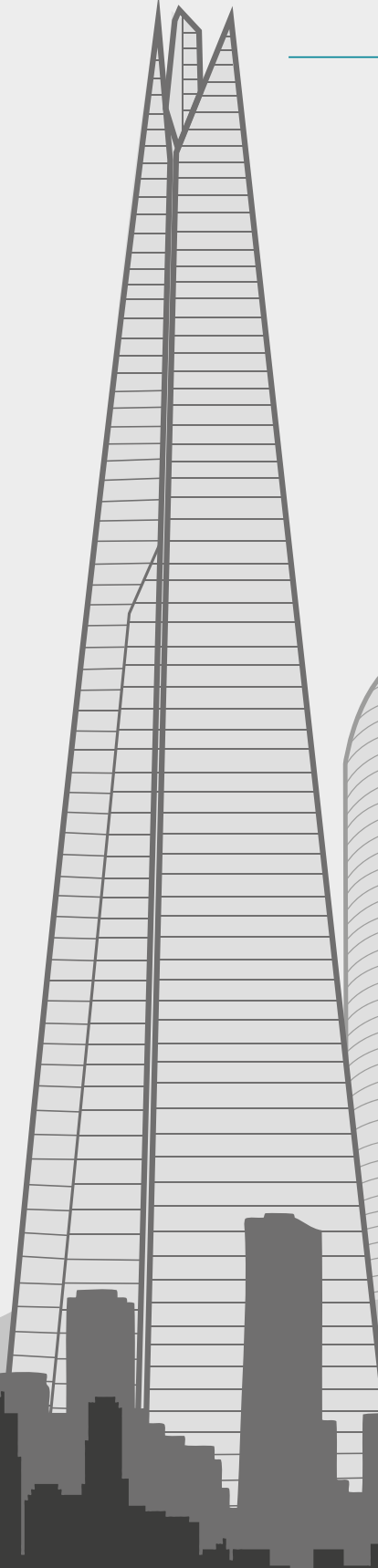
The exceptional quality of our products, outstanding customer service and our agility to support large scale developments makes **VADO** a globally trusted brand.

○ **Burj Khalifa**, Dubai, UAE

JW Marriott Marquis, Dubai, UAE ○

○ **Central Market**, Abu Dhabi, UAE

Serena Hotel, Kampala, Uganda ○



The Shard, London, UK

- Deansgate Square, Manchester
- Marine Wharf, London
- One Angel Square, Manchester
- Hilton Park Lane, London
- Marriott Royal Hotel, Bristol
- Montevetro Building, Dublin
- El Pasha Hotel, Ibiza
- Al Manshar Rotana Hotel, Kuwait
- Ocean 2 Hotel, Barbados
- Sheraton Hotel, Warsaw
- Marriott Hotel, Baku
- Angaga Island Resort, Maldives
- Chedi Hotel, Oman
- Intercontinental Resort, Mauritius
- Eastern & Oriental Hotel, Malaysia



Peckforton Castle, Cheshire, UK



Harbourside Apartments, Glasgow, UK



Telford Homes, London, UK

MAKING YOUR DREAM BATHROOM A REALITY.

STEP 1

Choose from one of our many bathroom brassware collections. We have a wide variety of styles to suit individual tastes.

STEP 2

Find your local stockist. If you don't already know who your local stockist is, visit vado.com/stockists to find your local verified **VADO** independent retailer.

STEP 3

Visit your verified **VADO** independent retailer to discuss all of your bathroom design and installation requirements with a fully trained bathroom adviser.

STEP 4

Reinvigorate yourself and your senses in your beautiful new bathing space.

†



VERIFIED VADO INDEPENDENT RETAILERS.

We carefully select and train all of our **VADO** independent retailers to ensure you have the best experience when selecting your perfect bathroom.

Our stockists will not only help you to select the right **VADO** taps and showering products to deliver you a great experience day in day out, they will also guide you in choosing the best coordinating sanitaryware and tiling options to create your dream bathroom.

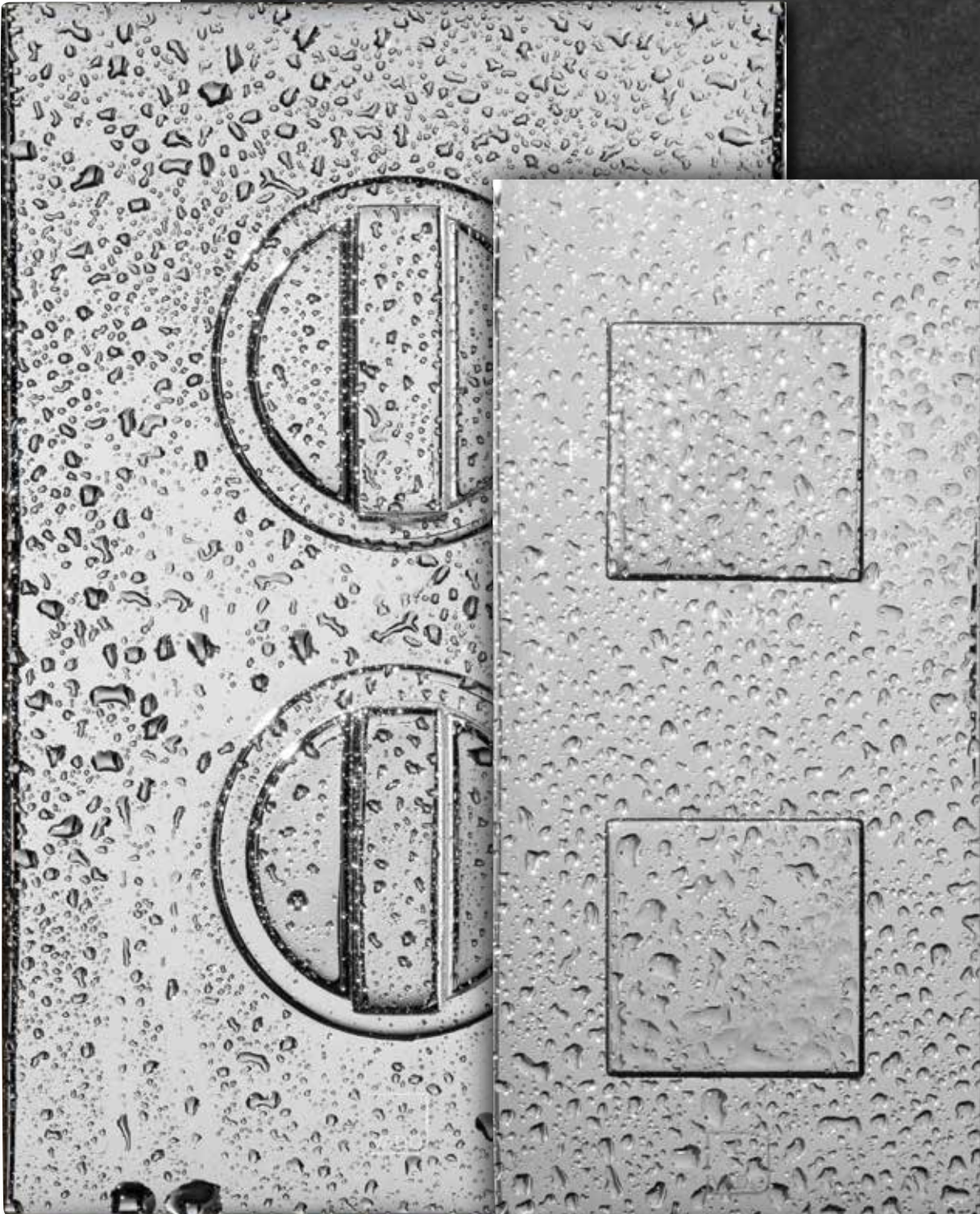
BRASSWARE IS OUR SPECIALITY

At **VADO** we believe in channelling all of our expertise and engineering know-how to focus just on brassware technology to deliver outstanding products that not only look great, but deliver a truly sensory experience.

We work to ensure our product designs are harmonious with all sanitaryware, so when you choose **VADO** your choice of coordinating items is unlimited. With **VADO** you can really **let your inspiration flow**.

DX VALVE

Available in nine styles and compatible with all VADO collections, the DX Valve is VADO's next generation thermostatic shower valve, designed to make installation quick and easy.




Actual size

THERMOSTATIC VALVE TECHNOLOGY EXPLAINED

VADO's class-leading, thermostatic shower valves offer precision control and advanced temperature stabilisation to ensure the safety and protection of all users.

Embracing the latest innovations in maximising water efficiency and performance, VADO's extensive range of thermostatic shower valves boast contemporary designs, exceptional functionality and effortless sophistication.

TABLET VALVE

Tablet's exclusive  technology delivers water to each outlet independently or all outlets simultaneously, ensuring a fully immersive showering experience even at low pressure.

	TABLET	DX VALVE
Collection	OMIKA, KOVERA, ALTITUDE, NOTION	NOTION, ORIGINS, MIX ² , LIFE, CELSIUS SQUARE, CELSIUS ROUND, PHASE, PHOTON, ELEMENTS
All-Flow technology that allows 2 outlets to operate simultaneously using a 2 handle valve	+	
Limescale resistant for easy cleaning	+	+
Cold water shut off at 46 degrees	+	+
Advanced 25mm depth tolerance	75-100mm	70-95mm
Tile-to mortar guard included with markings	+	+
Thermostatic cartridge technology to stabilise temperature fluctuations	+	+
Shower using a gravity system	+	+
Contoured, low-resistance waterways for class-leading performance	+	
Flat back plate for solid, secure mount	+	+
Screw-on shrouds and slide-on plates for a secure second fix	+	
Push-fit shrouds allowing angular adjustment for pitched walls		+
Easy access isolation points for easy maintenance	+	+

Concealed Shower Valve Packages



Easy Fit Shower Arm

Tablet Altitude
2 Outlet, 3 Handle
Thermostatic Valve

See page 16

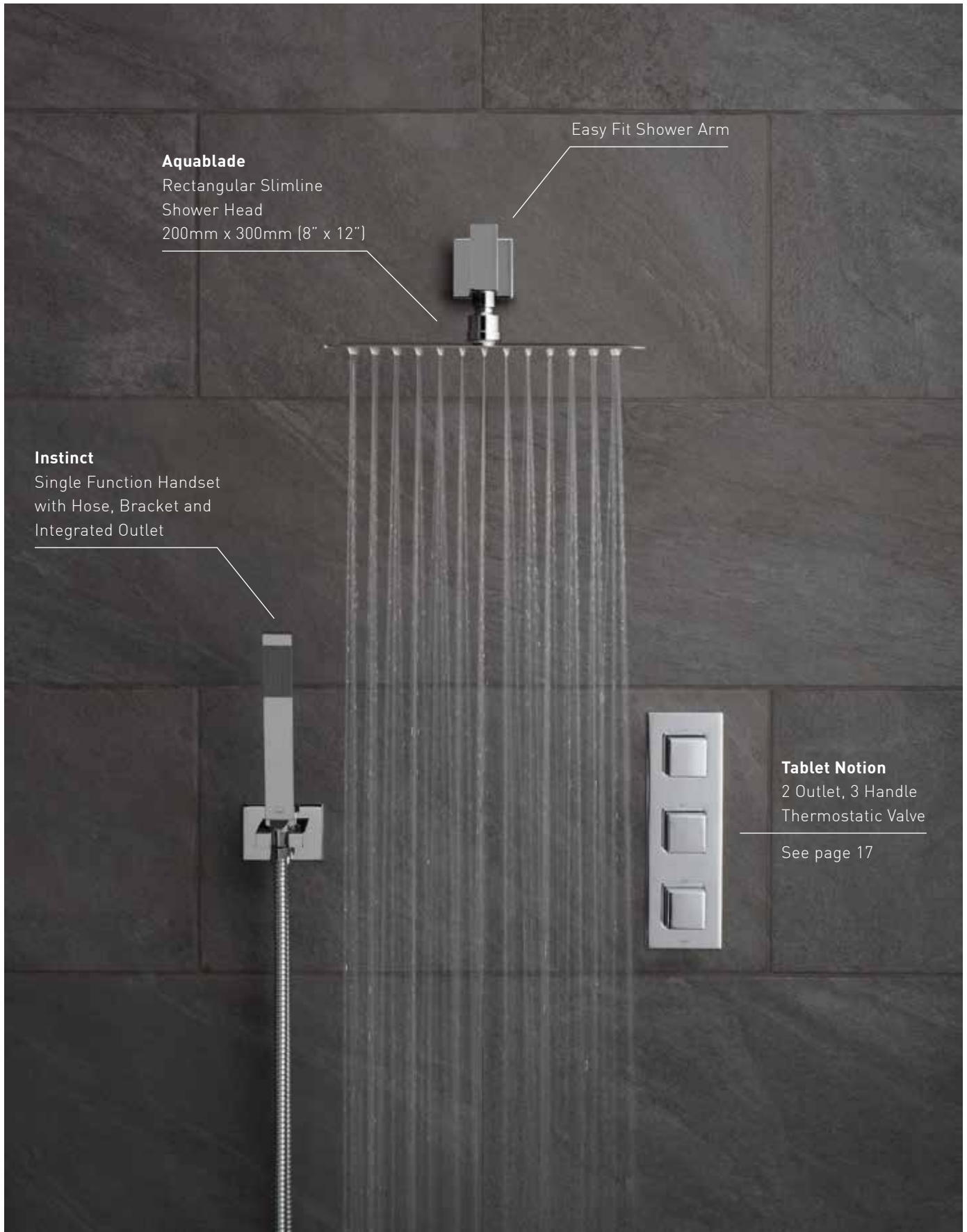
Aquablade
Round Slimline Shower Head
300mm (12") Diameter

Zoo
Single Function Handset
with Hose, Bracket and
Integrated Outlet

Tablet Altitude
TAB-1743/ALT-CP



Tablet Altitude combines style with simplicity to deliver a luxurious showering experience.



Aquablade

Rectangular Slimline
Shower Head
200mm x 300mm (8" x 12")

Easy Fit Shower Arm

Instinct

Single Function Handset
with Hose, Bracket and
Integrated Outlet

Tablet Notion

2 Outlet, 3 Handle
Thermostatic Valve

See page 17

With cubic angles and fashioned corners, Tablet Notion's refined aesthetic is equipped for any contemporary bathroom.

Tablet Notion
TAB-1743/NOT-CP





Easy Fit Shower Arm

Omika
Rectangular Shower Head
200mm x 300mm [8" x 12"]

| **NEW**
Omika
Single Function Handset
with Hose, Bracket and
Integrated Outlet

Tablet Omika
2 Outlet, 2 Handle
Thermostatic Valve

See page 16



Tablet Omika
TAB-1721/OMI-CP



Tablet Omika's geometric patterned handles perfectly partner the tapered Omika shower head to deliver a statement bathroom appearance.



Aquablade
Oval Slimline Shower Head
200mm x 300mm [8" x 12"]

Easy Fit Shower Arm

Tablet Kovera
2 Outlet, 2 Handle
Thermostatic Valve

See page 16



Life
Single Function Handset
with Hose, Bracket and
Integrated Outlet

Tablet Kovera's contemporary concave handles provide the perfect finishing touch to this stylish showering solution.

Tablet Kovera
TAB-1721/KOV-CP





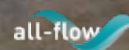
Easy Fit Shower Arm

Aquablade
Round Slimline Shower Head
300mm (12") Diameter

Zoo
Single Function
Handset with
Hose, Bracket and
Integrated Outlet

Tablet Altitude
2 Outlet, 2 Handle
Thermostatic Valve

See page 16



Tablet Altitude
TAB-1721/ALT-CP



A compact form with extensive functionality, Tablet Altitude delivers an exceptional showering performance.



Aquablade
Round Slimline Shower Head
300mm (12") Diameter

Easy Fit Shower Arm

Tablet Altitude
2 Outlet, 2 Handle
Thermostatic Valve

See page 16



Atmosphere
Single Function Slide
Rail Shower Kit
with Air-Injection

Life
Wall Outlet

Easy-Clean Soft Hose

Boasting fluid, contoured shapes and smooth, sleek surfaces, Tablet Altitude offers a flexible and stylish showering solution.

Tablet Altitude
TAB-1720/ALT-AS-CP





Easy Fit Shower Arm

Aquablade
Rectangular Slimline Shower Head
200mm x 300mm (8" x 12")

Tablet Notion
2 Outlet, 2 Handle
Thermostatic Valve

See page 16



Instinct
Single Function Handset
with Hose, Bracket and
Integrated Outlet

Tablet Notion
TAB-1721/NOT-CP



Tablet Notion's refined, cubic design delivers a contemporary shower for the modern bathroom.



Aquablade
Rectangular Slimline
Shower Head
200mm x 300mm (8" x 12")

Easy Fit Shower Arm

V2
Single Function
Slide Rail Shower Kit

Tablet Notion
2 Outlet, 2 Handle
Thermostatic Valve

See page 16



Instinct
Wall Outlet

Designed for a versatile showering experience, Tablet Notion offers a simple yet sophisticated look.

Tablet Notion
TAB-1720/NOT-V2-CP





DX Notion
DX-172251-NOT-CP



Combining refined angles with a sleek, modern aesthetic, the DX Notion package provides a contemporary touch of class.

| **NEW**

Available with
Round Backplate



Easy Fit Shower Arm



Saturn
Round Shower Head
254mm (10") Diameter

Zoo
Single Function Handset
with Hose, Bracket
and Integrated Outlet



DX Celsius Square
2 Outlet, 2 Handle
Thermostatic Valve



See page 16

DX Celsius features stylishly smooth contoured surfaces to suit all modern bathroom interiors.

DX Celsius
DX-172251-CELSQ-CP
(With Square Backplate)

NEW

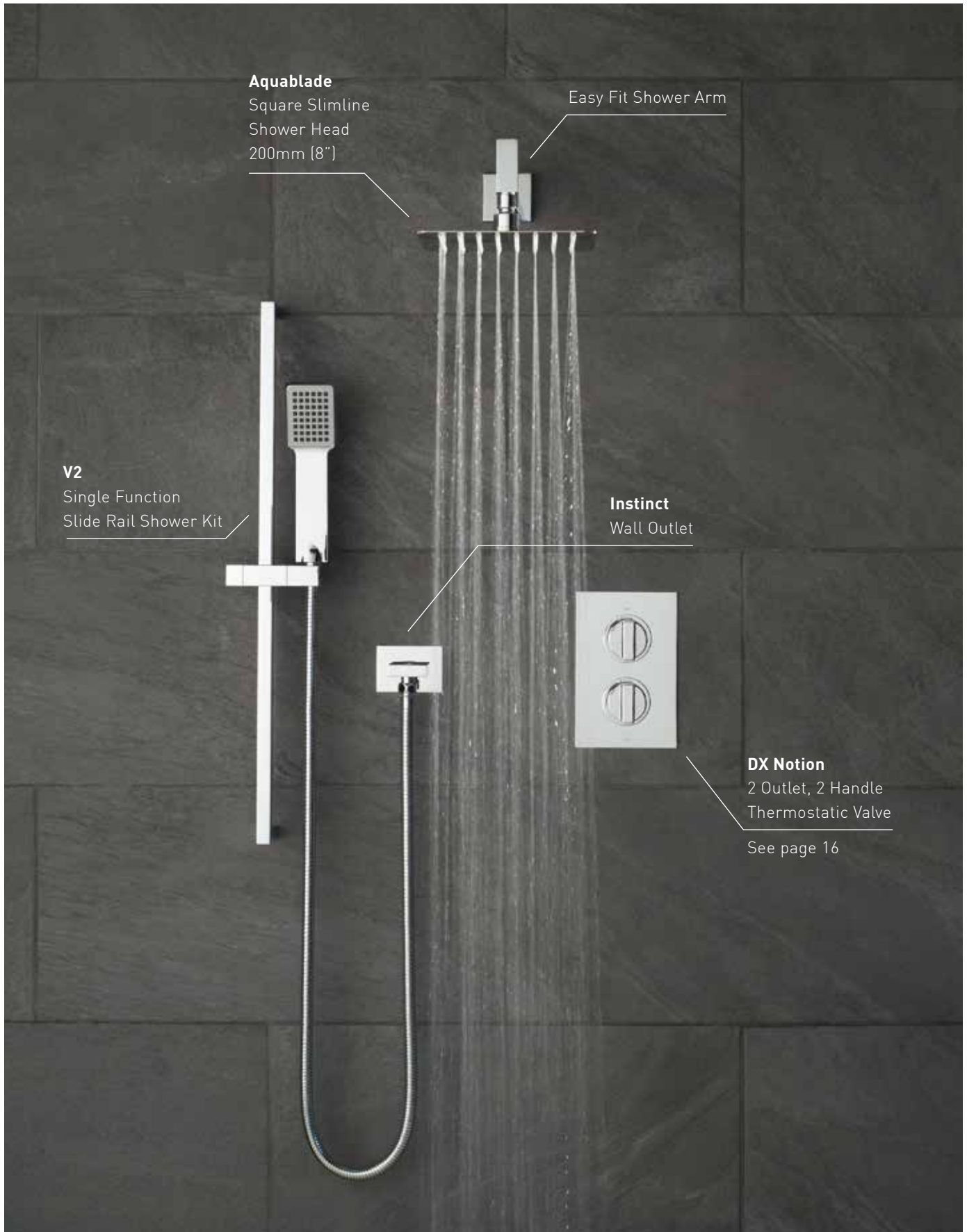
DX Celsius
DX-172251-CELRO-CP
(With Round Backplate)



DX Celsius
DX-172250-CELRO-CP



The DX Celsius package combines form and function to provide a flexible showering solution.



Developed for enhanced showering flexibility, the DX Notion package boasts strong, cubic forms for a modern, sophisticated look.

DX Notion
DX-172250-NOT-CP





Easy Fit Shower Arm

Aquablade
Oval Slimline Shower Head
200mm x 300mm (8" x 12")

DX Life
2 Outlet, 2 Handle
Thermostatic Valve

See page 16

Atmosphere
Single Function Slide
Rail Shower Kit
with Air-Injection

Life
Wall Outlet

DX Life
DX-172250-LIF-CP



Boasting contemporary, oval forms, the DX Life package delivers an elegant showering solution.



Aquablade

Oval Slimline Shower Head
200mm x 300mm (8" x 12")

Easy Fit Shower Arm

DX Life

2 Outlet, 2 Handle
Thermostatic Valve

See page 16

Life

Single Function Handset
with Hose, Bracket
and Integrated Outlet

Delivering a clean and compact bathroom aesthetic, DX Life is the perfect choice for the modern, minimalist home.

DX Life
DX-172251-LIF-CP





Easy Fit Shower Arm

Atmosphere
Square Air-Injection
Shower Head
200mm (8")

Instinct
Single Function Handset
with Hose, Bracket
and Integrated Outlet

DX Mix²
2 Outlet, 2 Handle
Thermostatic Valve
See page 16

DX Mix²
DX-172251-MIX-CP



The DX Mix² package boasts a bold, cubic aesthetic for the sophisticated, modern bathroom.



Aquablade
Square Slimline
Shower Head
200mm (8")

Easy Fit Shower Arm

Instinct
Single Function Handset
with Hose, Bracket
and Integrated Outlet

DX Phase
2 Outlet, 2 Handle
Thermostatic Valve
See page 16

Fusing sleek surfaces with angular forms, the DX Phase package provides a stylish solution for the contemporary bathroom.

DX Phase
DX-172251-PHA-CP





Tablet Altitude
TAB-1710/ALT-AS-CP

1 unit LP

Featuring exclusive air-injection technology, this Tablet Altitude package offers a flexible and stylish showering solution.



Designed for complete showering flexibility, the DX Notion package lends itself to all modern bathrooms.

DX Notion
DX-17125-NOT-CP





DX Celsius Round
DX-17125-CELRO-CP



Featuring elegant, rounded forms, the DX Celsius package provides a versatile solution to suit to all bathroom interiors.



Featuring elegant, rounded forms, the DX Celsius package is designed for maximum showering flexibility.

DX Celsius Round
DX-17120-CELRO-CP

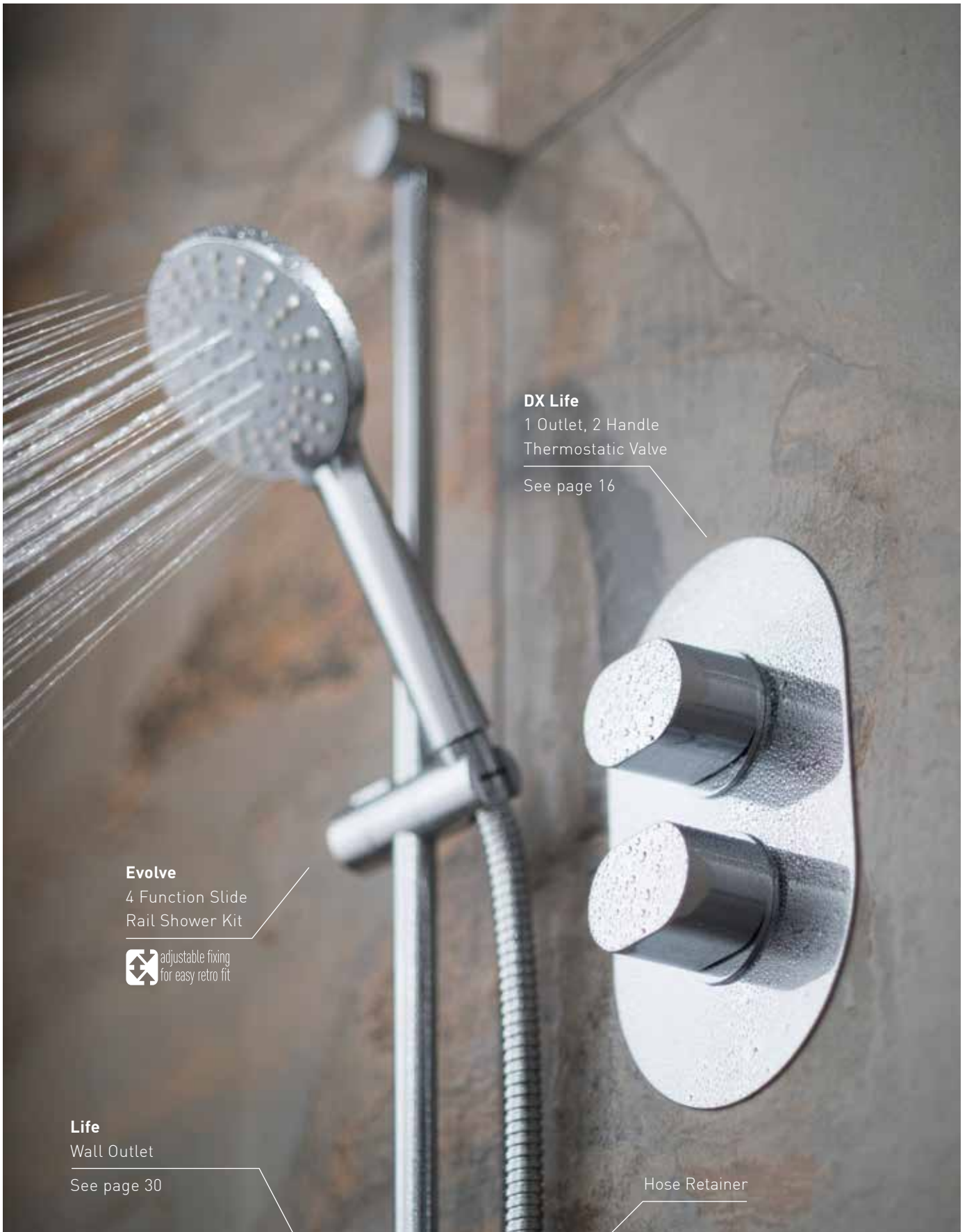




DX Celsius Square
DX-17120-CELSQ-CP



Featuring curved angles and rounded forms, the DX Celsius package is designed for maximum showering flexibility.



DX Life
1 Outlet, 2 Handle
Thermostatic Valve

See page 16

Evolve
4 Function Slide
Rail Shower Kit



Life
Wall Outlet

See page 30

Hose Retainer

Featuring contemporary, oval forms, the DX Life package ceates an elegant showering solution with enhanced flexibility.

DX Life
DX-17120-LIF-CP





V2
Single Function
Slide Rail Shower Kit

DX Notion
1 Outlet, 2 Handle
Thermostatic Valve
See page 16

Instinct
Wall Outlet

DX Notion
DX-17120-NOT-CP



Designed to coordinate with all bathroom interiors, the DX Notion package offers a simple yet sophisticated look.



Rigid Riser Shower Kit with Integrated Diverter

Saturn
Round Shower Head
254mm (10") Diameter

Atmosphere
Single Function
Air-Injection Handset

DX Celsius Round
1 Outlet, 2 Handle
Thermostatic Valve

See page 16

Easy-Clean Soft Hose

The DX Celsius valve perfectly complements the round rigid riser kit to offer a sleek and minimalist bathroom appearance.

DX Celsius Round / Velo
DX-17129-CELRO-CP

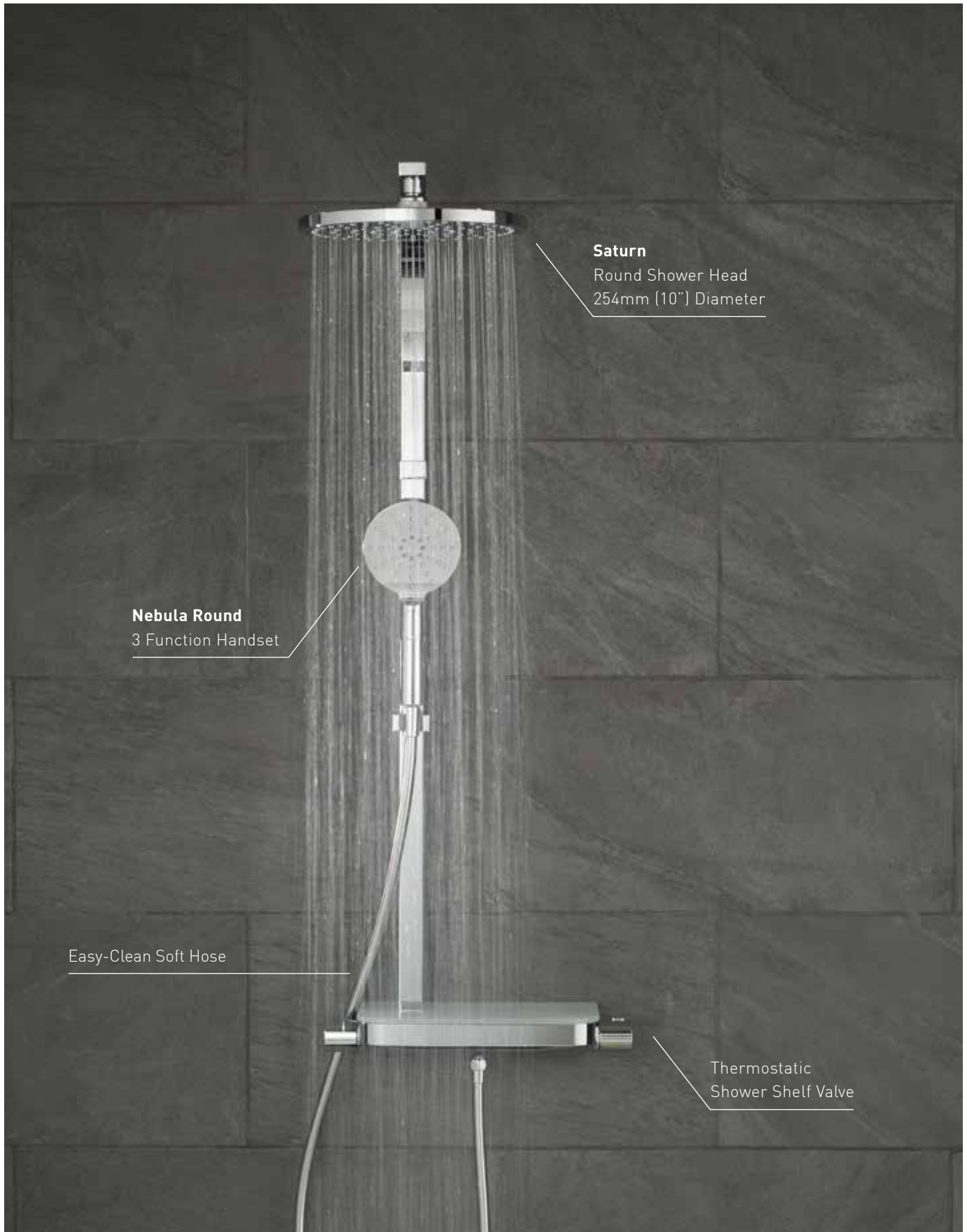




DX Notion / Velo
DX-17129-NOT-CP



Designed for complete showering flexibility, the DX Notion rigid riser package provides a sleek and sophisticated look.



Featuring a multipurpose, thermostatic shower shelf valve, the Strata shower column excels in both form and function.

Strata
STRA-149RRK-CP





Aquablade

Rectangular Slimline
Shower Head
200mm x 300mm (8" x 12")

Easy-Fit
Adjustable Bracket

Nebula Square
3 Function Handset

Easy-Clean Soft Hose

Exposed Thermostatic
Shower Valve

Phase

PHA-149RRK-CP



Phase fuses cubic forms with calming curves to add a note of boldness to your bathroom.

| NEW



Atmosphere
Round Air-Injection
Shower Head
200mm (8") Diameter

Easy-Fit
Adjustable Bracket

Atmosphere
5 Function
Air-Injection Handset

Exposed Thermostatic
Shower Valve

Featuring a sleek and stylish design, the Atmosphere shower column offers a versatile solution.

Atmosphere
ATM-149RRK-RO-CP





| NEW

Aquablade
Round Slimline
Shower Head
300mm (12")

Easy-Fit
Adjustable Bracket

Aquablade
Round Single
Function Handset

Exposed Thermostatic
Shower Valve

Aquablade Round
AQB-149RRK-RO-CP



The Aquablade Round shower column is a complete thermostatic showering solution which boasts a stylish, streamlined aesthetic.

| NEW

Aquablade
Rectangular Slimline
Shower Head
200mm x 300mm (8" x 12")

Easy-Fit
Adjustable Bracket

Aquablade
Square Single
Function Handset

Exposed Thermostatic
Shower Valve

A complete thermostatic showering solution, Aquablade boasts a sleek, linear design for a refined finish.

Aquablade Square
AQB-149RRK-SQ-CP

2 MP

| NEW

Saturn
Round Shower Head
254mm (10")

Easy-Fit
Adjustable Bracket

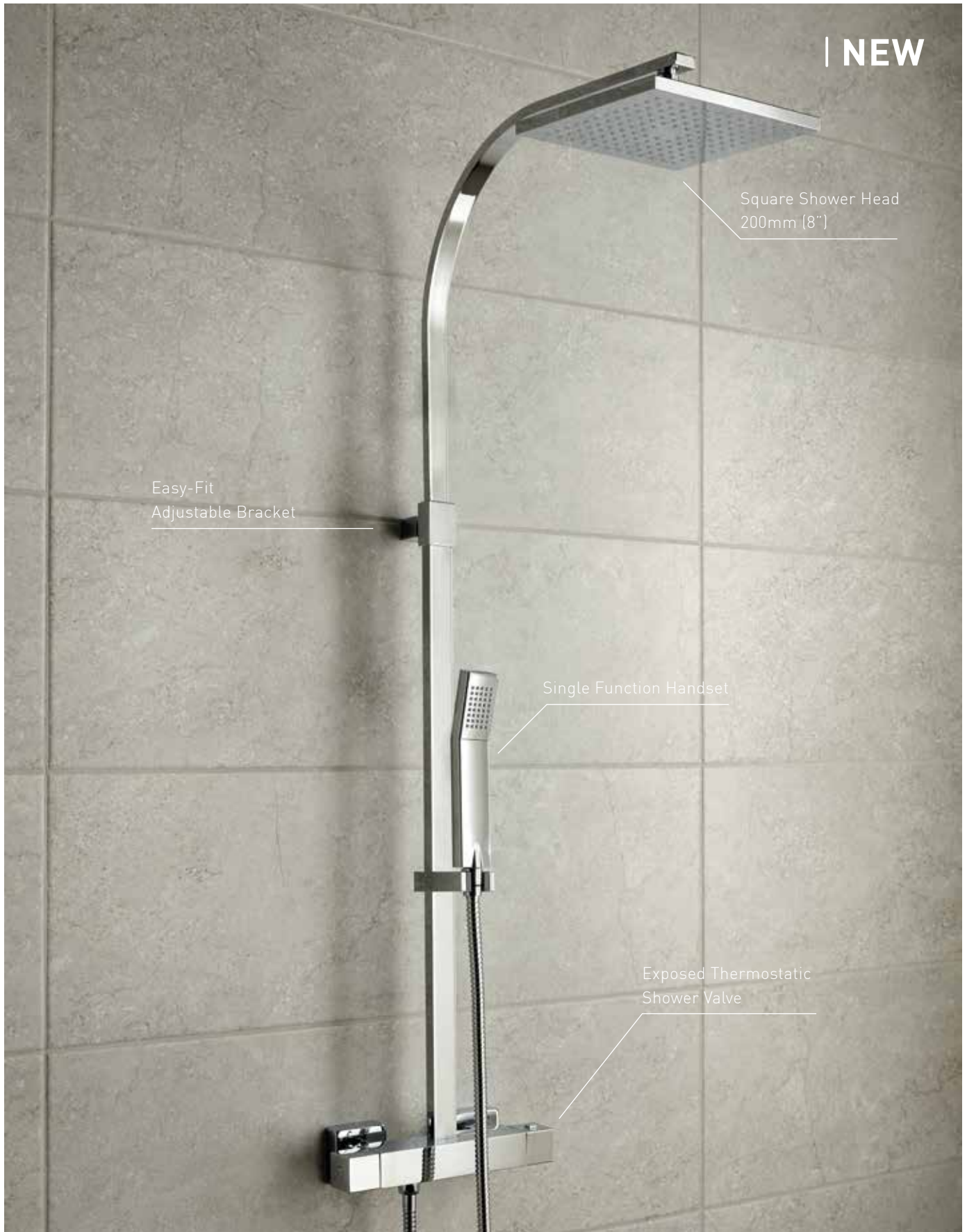
Atmosphere
Single Function
Air-Injection Handset

Exposed Thermostatic
Shower Valve

Velo Round
VEL-149RRK-RO-CP



The Velo Round shower column features a minimalist design that suits all bathroom interiors for supreme flexibility.



| NEW

Square Shower Head
200mm (8")

Easy-Fit
Adjustable Bracket

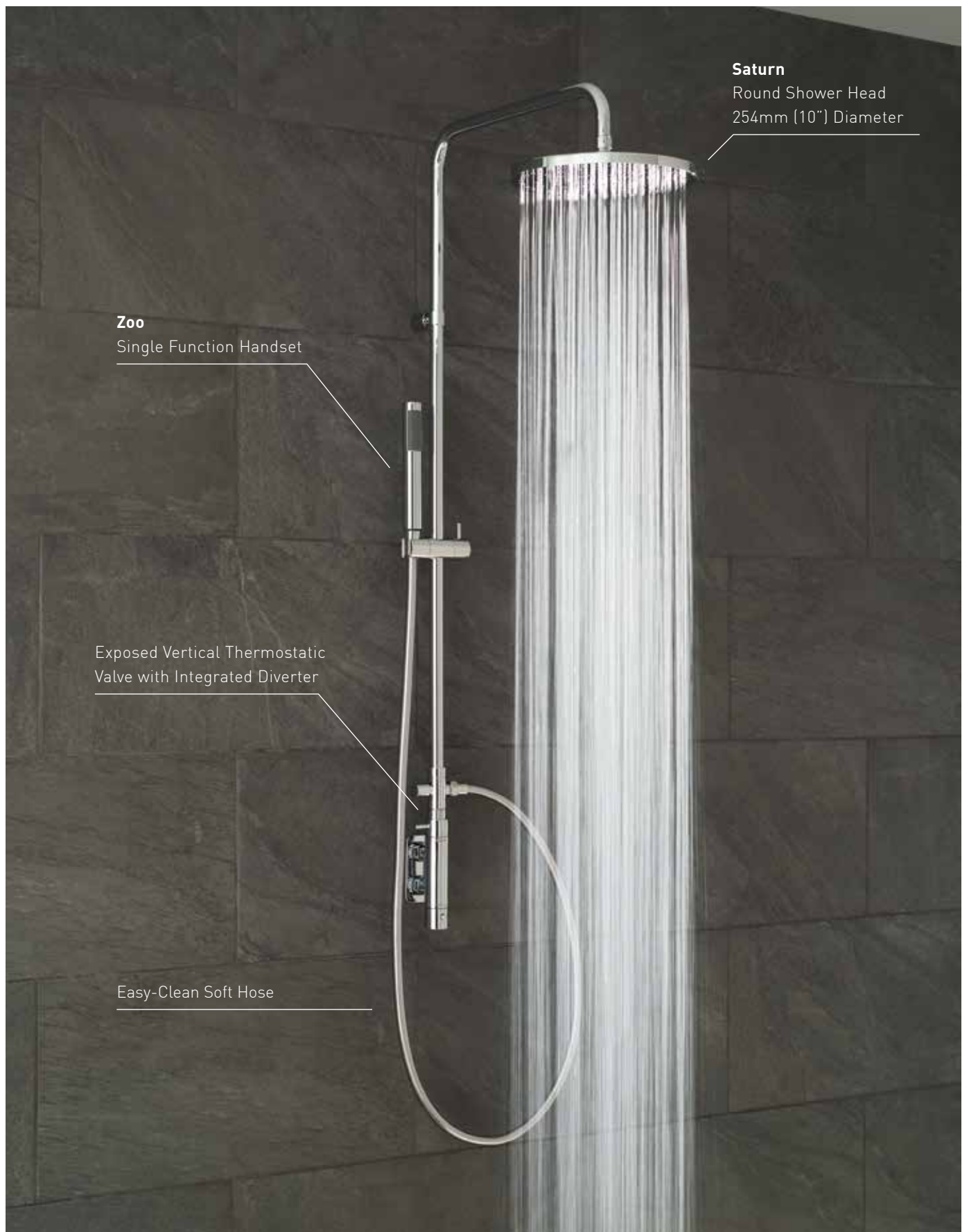
Single Function Handset

Exposed Thermostatic
Shower Valve

Designed in line with contemporary minimalist trends, the Velo Square shower column boasts bold, cubic forms and sleek linear surfaces.

Velo Square
VEL-149RRK-SQ-CP





Saturn
Round Shower Head
254mm (10") Diameter

Zoo
Single Function Handset

Exposed Vertical Thermostatic
Valve with Integrated Diverter

Easy-Clean Soft Hose

Vertex
VER-149/RO/RRK-C/P

2 MP

Featuring a sleek and stylish, minimalist design, the Vertex shower column offers a superior showering solution.



Saturn
Round Shower Head
254mm (10") Diameter

Atmosphere
Single Function
Air-Injection Handset

Exposed Thermostatic
Shower Valve

Boasting a compact, minimalist design, the Velo shower column features an air-injection shower handset for exceptional performance.

Velo
VEL-149RRK/DIV/ST-CP

2 MP

| **NEW**



Horizon
Cross Spray
Shower Head

Easy-Fit
Adjustable Bracket

Horizon
Cross Spray
Shower Handset

Easy-Clean Soft Hose

Exposed Thermostatic
Shower Valve

Horizon
HORI-149RRK-CP

2 MP

Horizon's innovative halo design creates a unique, soft, cross-spray water pattern to save water without compromise.

| NEW



Atmosphere
 5 Function
 Slide Rail Shower Kit
 with Air-Injection

Mini Concentric
 Exposed Thermostatic
 Shower Valve

Easy-Clean Soft Hose
 Available as separate purchase

Boasting a small and compact design, this stylish thermostatic showering solution is the perfect choice for minimalist bathrooms and bijou shower spaces.

Mini Concentric
WG-1760-ATM-CP





Wall Brackets with Shrouds

Original shrouds supplied with valve can fit over the easy-fix bracket

V2
Single Function Slide Rail Shower Kit

Té
Exposed Thermostatic Shower Valve 1/2"

Té
WG-TEBOX149/B-1/2-CP
(With Easy-Fix Wall Brackets)

1 LP

Suitable for all bathroom interiors, Té's strong, cubic design boasts simplicity and sophistication.

Té
WG-TEBOX149-1/2-C/P
(Without Easy-Fix Wall Brackets)

1 LP



Wall Brackets with Shrouds

Original shrouds supplied with valve can fit over the easy-fix bracket

Evolve
4 Function Slide Rail Shower Kit

 adjustable fixing for easy retro fit

Hose Retainer

Celsius
Exposed Thermostatic Shower Valve 3/4"

Compatible with 3/4 inch pipework and all bathroom interiors, the Celsius package is designed for maximum showering flexibility.

Celsius
CEL-1701-3/4-11-C/P
(With Easy-Fix Wall Brackets)

Celsius
CEL-1700-3/4-11-C/P
(Without Easy-Fix Wall Brackets)



Wall Brackets with Shrouds

Original shrouds supplied with valve can fit over the easy-fix bracket

Evolve
4 Function Slide Rail Shower Kit

 adjustable fixing for easy retro fit

Hose Retainer

Celsius
Exposed Thermostatic Shower Valve 1/2"

Celsius

CEL-1701-1/2-11-C/P

(With Easy-Fix Wall Brackets)

 LP

Compatible with 1/2 inch pipework, the Celsius package is a versatile solution that fits all bathroom designs.

Celsius

CEL-1700-1/2-11-C/P

(Without Easy-Fix Wall Brackets)

 LP



Hose Retainer

DGS*
Exposed Thermostatic
Shower Valve 1/2"

Eris
3 Function Slide
Rail Shower Kit

*Valve pictured with wall brackets and shrouds

Boasting style and simplicity, the Prima showering package lends itself to all bathroom interiors.

Prima
PRIMABOX4/B-MF-C/P
(With Easy-Fix Wall Brackets)

1 unit LP

Prima
PRIMABOX4-MF-C/P
(Without Easy-Fix Wall Brackets)

1 unit LP



Wall Brackets with Shrouds

Original shrouds supplied with valve can fit over the easy-fix bracket

Eris
Single Function Slide Rail Shower Kit

Hose Retainer

DGS*
Exposed Thermostatic Shower Valve 1/2"

*Valve pictured with DGS standard shrouds

Prima

PRIMABOX4/B-SF-C/P

(With Easy-Fix Wall Brackets)



Boasting style and simplicity, the Prima showering package is designed for a versatile showering experience.

Prima

PRIMABOX4-SF-C/P

(Without Easy-Fix Wall Brackets)





Featuring circular contours and eye-catching design details, the Westbury showering package offers a classic design for the traditional bathroom.

Westbury
MAJESTIQ/RRK-C/P



BASKETS

Stylishly store your showering and bathing essentials in this collection of easy-fit baskets.

For further information visit
www.vado.com/baskets



BASKETS ACCESSORIES

www.vado.com/baskets



Removable Corner Basket
185 (W) x 185 (D) x 60mm (H)

BAS-2000-C/P



Medium Triangular
Corner Basket
220 (W) x 147 (D) x 65mm (H)

BAS-2015M-C/P



Large Triangular
Corner Basket
260 (W) x 164 (D) x 85mm (H)

BAS-2015L-C/P



Large Triangular
Corner Basket
270 (W) x 194 (D) x 105mm (H)

BAS-2012-C/P



Corner Basket
with Hook
206 (W) x 206 (D) x 90mm (H)

BAS-2014-C/P



Small Rectangular Basket
135 (W) x 103 (D) x 37mm (H)

BAS-2001-C/P



Medium Rectangular Basket
210 (W) x 128 (D) x 37mm (H)

BAS-2002-C/P



Medium Rectangular Basket
210 (W) x 128 (D) x 65mm (H)

BAS-2016M-C/P



Large Rectangular Basket
300 (W) x 138 (D) x 85mm (H)

BAS-2016L-C/P



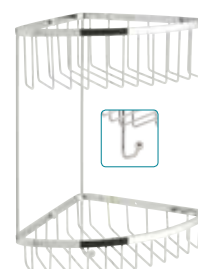
Large Double Triangular
Corner Basket
200 (W) x 160 (D) x 206mm (H)

BAS-2013-C/P



Large Double Rectangular
Basket with Hooks
304 (W) x 140 (D) x 484mm (H)

BAS-2003-C/P



Large Double Triangular
Corner Basket with Hook
269 (W) x 196 (D) x 368mm (H)

BAS-2004-C/P



ALL CHROME ELECTRIC SHOWERS

A stylish, slimline electric shower. Featuring a start/stop button with phased shutdown to help prevent limescale build-up, push button power selectors, temperature control with numbered dial and low pressure indicator. Comes complete with slide rail kit, anti-kink chrome hose and easy-clean shower head with 5 spray patterns.



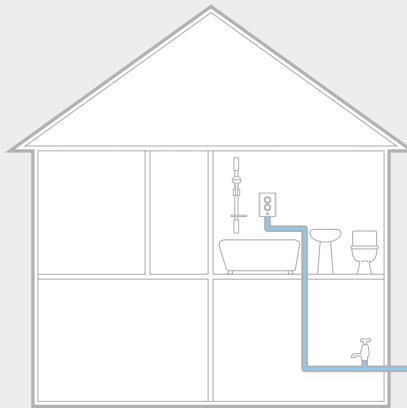
ELEGANCE ELECTRIC SHOWERS

A contemporary, design-led electric shower with soft press, illuminated buttons, start/stop switch, power on indicator, low pressure indicator and phased shutdown feature which helps to reduce limescale build-up. Comes complete with slide rail kit, anti-kink chrome hose and easy-clean shower head with 5 spray patterns.

The exclusive range of electric showers from VADO feature advanced showering technology and outstanding design. As you choose from stylish All Chrome to contemporary Elegance, you can be sure you are giving your bathroom a truly original look and feel.

KILOWATT RATING EXPLAINED

The higher the kilowatt power rating (kW) the better the performance and greater the flow of heated water. As a general rule, for every kW rating increase (for example going from 8.5kW to 9.5kW) you should experience a 12.5% increase in flow.



PLUMBING REQUIREMENTS

Electric showers are connected to a cold mains water supply before water is heated by an element inside the shower to provide instant hot water. This vastly improves energy efficiency as water is only heated during usage.

See chart detailing the electrical requirements.

Power rating @240V	Power rating @230V	MCB protection rating	Cartridge fuse
8.5 kW	7.9 kW	40A	45A
9.5 kW	8.8 kW	40/45A	45A

Note: Please note all kW stated throughout the guide are at 240V



All Chrome Electric Shower

ELS-CHR-85-CP - 8.5kW
ELS-CHR-95-CP - 9.5kW



Bronze Electric Shower

ELS-ELE-85-BRZ - 8.5kW
ELS-ELE-95-BRZ - 9.5kW



Black Speckled Electric Shower

ELS-ELE-85-BLS - 8.5kW
ELS-ELE-95-BLS - 9.5kW



Metallic Electric Shower

ELS-ELE-85-MET - 8.5kW
ELS-ELE-95-MET - 9.5kW



Grey Electric Shower

ELS-ELE-85-GRE - 8.5kW
ELS-ELE-95-GRE - 9.5kW

TERMS AND CONDITIONS

DEFINITIONS

In these conditions 'the Company' shall mean VADO, a division of Norcros (Holdings) Limited, 'the purchaser' shall mean the person, firm or company to whom any quotation is addressed or with whom any contract is made and 'the goods' shall mean the goods and/or services agreed to be sold by the Company to the purchaser.

1. QUOTATION AND ACCEPTANCE

- (a) All quotations are given and all orders are accepted on these terms which shall apply to the exclusion of and shall override any other terms stipulated or referred to by the purchaser whether in its order or any other document, or in any negotiations or communication or course of dealing established between the Company and the purchaser;
- (b) No modification or amendment of these terms or addition thereto shall be effective unless made in writing and signed by a director of the Company.

2. DESCRIPTION OF AND STATEMENTS AS TO GOODS

- (a) Save where the goods are stated to be sold as complying with a recognised trade or industry standard, all descriptions, specifications, drawings and particulars of weights and dimensions submitted by the Company or otherwise contained in the Company's catalogues, brochures, price lists, quotations and publicity materials are approximate only and the Company shall not be liable for their accuracy unless they are expressly incorporated into the contract in writing;
- (b) These terms represent the entire agreement between the Company and the purchaser relating to the goods and such terms supersede and the purchaser shall not place any reliance upon any statements, recommendations and advice whether oral or in writing given (whether before or after the acceptance by the Company of the purchaser's order) by the Company, its servants or agents as to any matter relating to the goods save where such statement, recommendations or advice is given in writing and signed by a director of the Company in response to a specific written request from the purchaser before or at the time of the Company's acceptance of the order.

3. PRICES

- Prices quoted by the Company are those in effect at the date of quotation. Unless otherwise agreed in writing, the Company reserves the right to increase prices when it accepts the purchaser's order so as to reflect one or more of the following:
- (a) any variation that may have occurred in the costs of labour, materials, suppliers overheads and transport;
 - (b) any change in duty, tax, surcharge or levy of any kind whatsoever affecting the sale price of the goods;
 - (c) any cost to the Company resulting from delay by the purchaser in giving to the Company information sufficient to enable it to supply the goods or provide the services or resulting from any alteration made at the request of the purchaser in the specification of the goods or in the place to which they are to be delivered or shipped;
 - (d) any extra cost to the Company resulting from the goods being carried at the request of the purchaser by mode of transport more expensive than the Company's normal form of transport.

4. PAYMENT

- (a) Unless otherwise agreed in writing, the price for the goods will be due and payable on the last business day of the month following delivery;
- (b) The Company shall be entitled to charge interest on any part of the price which is not paid in accordance with clause (a) at the rate per annum of 3% above the Base Rate of Lloyds Banking Group from time to time;
- (c) Time of payment is of the essence and if the purchaser defaults in punctual payment of the price the Company shall be entitled to terminate the contract and recover the goods at the purchaser's expense without prejudice to any further rights which the Company may have;
- (d) Any default in payment of an invoice or an instalment payment on an invoice on the due date shall render the entire balance outstanding on all invoices from the Company to the purchaser immediately payable in full without demand being made notwithstanding any contrary provisions as to terms of payment in any one or all invoices;
- (e) If the purchaser fails to give all instructions reasonably required by the Company and all necessary document, licences, consents and authorities for forwarding the goods or is unable to accept delivery of the goods at the time when the goods are due and ready for despatch or delivery or shall otherwise cause or request delay, the purchaser shall pay to the Company all costs and expenses, including storage and insurance charges incurred or arising from such delay during which, at the Company's absolute discretion if its storage facilities permit, the goods will be stored at the purchaser's sole risk. This provision shall be in addition to and not in substitution for any other payment or damages for which the purchaser may be liable in respect of his failure to take delivery at the appropriate date;
- (f) The purchaser shall not be entitled to make any deduction from the price of goods which have been delivered to the purchaser in respect of any set off or counterclaim unless both the validity and the amount thereof have been expressly admitted in writing by the Company and such admission is signed by a director of the Company;
- (g) In the absence of any specific appropriation by the purchaser, the Company shall have the right to appropriate any payment made by the purchaser towards the satisfaction of any invoice outstanding from time to time as the Company shall in its absolute discretion think fit.

5. DELIVERY

- (a) Any time or date stated for delivery is given and intended as an estimate only and the Company shall not be liable for any loss or damage whatsoever resulting from any delay in delivery howsoever arising;
- (b) Unless otherwise stated in writing delivery shall be deemed to take place upon the occurrence of the first in time of the following, namely:
 - i. the physical delivery of the goods to the purchaser at the Company's works;
 - ii. the physical delivery of the goods to the purchaser's carrier or agent for the purpose of transmission to the purchaser or his nominee;
 - iii. the physical delivery of the goods to the purchaser's place of business or such other place as he may direct by the Company, its carrier or agent, the purchaser being responsible for unloading;
- (c) Signature of the Company's delivery note by any employee, representative or agent of the purchaser shall be conclusive proof of delivery;
- (d) Where the contract provides for delivery by the Company, its carrier or agent:
 - i. any claims for non-delivery must be made in writing to the Company within three days of receipt of invoice or advice note whichever is the earlier;
 - ii. any claims in respect of goods damaged in transit or shortages in delivery must be made in writing to the Company within three days of delivery; shortages in delivery shall not give rise to a right to reject the goods delivered;
- (e) The Company shall be entitled to make partial deliveries or deliveries by instalments and all the provisions of these terms shall apply to such deliveries;

6. PROPERTY AND RISK

- (a) Risk in the goods shall pass to the purchaser at the time at which delivery takes place in accordance with clause 5 above and the purchaser shall be solely responsible for insuring the goods thereafter;
- (b) The Company shall retain ownership of and title in the goods delivered until full payment has been made in respect of all such goods. Until such time the goods shall be:
 - i. stored separately from other goods in the possession of the purchaser;
 - ii. marked or otherwise rendered identifiable as being the property of the Company;
 - iii. held by the purchaser as bailee of the Company;
 - iv. held by the purchaser free from any charge, lien or other encumbrance;
- (c) Provided the Company has not requested their return and notwithstanding that payment in full has not been made for all of the goods delivered, the purchaser as principal and not as agent for the Company shall be entitled to use the goods or offer for sale and sell them in the ordinary course of his business;
- (d) Where the purchaser sells the goods prior to paying for them in full:
 - i. the Company shall be legally and beneficially entitled to the proceeds of sale;
 - ii. the purchaser shall hold the proceeds of sale on trust for the Company and shall not mingle them with other monies and shall not pay them into an overdrawn bank account;
 - iii. he shall deposit the proceeds of sale in a separate bank account, the location and number of which he has previously notified to the Company, and he shall not be entitled to use or deal with the proceeds of sale until payment in full for the goods has been made to the Company;
- (e) The Company shall have the right at any time by its servants or agents to enter the purchaser's premises where the goods are stored, or are thought the Company to be stored, so as to:
 - i. retake possession of the goods when the Company has requested their return and the purchaser has not immediately complied with the request, such retaking or return to be without prejudice to any other rights the Company may have arising therefrom;
 - ii. inspect the storage of the Company's goods which have not been paid for in full;
 - iii. investigate and ascertain whether all these terms are being complied with;

7. GUARANTEE AND LIABILITY

- (a) The Company guarantees all goods which have been manufactured by the Company against any defect of work or materials which can be proved to the Company's satisfaction to have been caused before delivery provided that:
 - i. the goods are used for their normal purpose,
 - ii. full details of any such defect are notified to the Company within thirty days of its first appearance and the goods in which the defect arises are returned at the purchaser's expense to the Company;
- (b) The guarantee shall be for a period of twelve years from the date of delivery for all product except pumps which are 3 years for Monsoon and 1 year for Showermate and products with any other finish that is not chrome, such as gold, which are guaranteed for 3 years. The liability of the Company shall be limited at its option either to supply replacement goods, which will be supplied subject to these terms, or refunding of the goods;
- (c) The Company gives no guarantee in respect of goods not manufactured by it but shall use all reasonable endeavours to procure for the purchaser or assign to the purchaser the benefit of any guarantee obtained by it from the manufacturer or supplier thereof; however the Company shall not be required to commence litigation against such manufacturer or supplier or to incur any expense in connection with any such claim by the purchaser;
- (d) The above guarantee is given in lieu of and to the exclusion of all other warranties, conditions, representations and undertakings express or implied by statute or otherwise in respect of the quality or fitness for purpose of the goods or as to their condition or performance or as to any other matter except where such warranty or condition is implied by statute and by reason of a statutory provision, cannot be excluded;

- (e) Save as provided herein and save in any case where death or personal injury has been caused by the Company's negligence or any case where the Company is liable for a defect in the goods pursuant to Part 1 of the Consumer Protection Act 1987 or any statutory replacement thereof, the Company shall be under no liability whatsoever to the purchaser for any loss or damage whether direct, indirect or consequential arising out of any defect in, failure of or unsuitability for any purpose of the goods or any part thereof whether the same be due to any act, omission, breach of contract, negligence or wilful default in design, workmanship or materials or any other cause.
8. **INDEMNITY AS TO INDUSTRIAL PROPERTY RIGHTS**
- (a) The purchaser shall indemnify the Company against all loss, damages, costs and expenses suffered or incurred by the Company or to which the Company may become liable as a result of any work carried out in accordance with the purchaser's specification(s) which involves infringement or alleged infringement of a patent, registered design or other industrial property right;
- (b) If the purchaser uses or sells the goods in such a manner as to infringe any such rights the company shall not be responsible for such infringement and the purchaser agrees to indemnify the Company from and against all liability arising therefrom.
9. **TERMINATION**
- The Company shall have the right forthwith to cancel the purchaser's order if any of the following events occur and subject to enforcement of the Company's rights to recover the goods and to receive payment of the price or damages, the contract shall be deemed to have terminated:
- (a) the purchaser commits any breach of its obligations to the Company;
- (b) any distress or execution is levied upon any property of the purchaser;
- (c) the purchaser makes or offers to make any arrangement or composition with creditors or commits any act of bankruptcy or insolvency;
- (d) any resolution is passed or petition presented to wind up the purchaser;
- (e) a receiver or administrator is appointed or any chargee takes possession of all or any part of the undertaking or assets of the purchaser;
- (f) the purchaser stops payment or ceases or threatens to cease to carry on its business or to pay its debts as and when they fall due;
- (g) any remittance for payment of the whole or any part of the purchase price of the goods is dishonoured by the purchaser's bankers.
10. **ASSIGNMENT**
- The purchaser shall not assign or transfer or purport to assign or transfer any contract to which these terms apply to any other person without the Company's prior written consent. The Company reserves the right to subcontract the performance of the contract or any part of it.
11. **FORCE MAJEURE**
- If the Company is prevented or delayed (directly or indirectly) from making delivery of the goods or any part thereof or from otherwise performing the contract or any part thereof by reason of war, embargo, riot, strike, lock-out, trade dispute, fire, breakdown of plant or machinery, inclement weather, interruption of transport, Government action, delay in delivery to the Company of any goods or materials, or by any cause whatsoever (whether or not of a like nature to the foregoing) outside its control, it shall be under no liability whatsoever to the purchaser and shall be entitled at its option either to cancel the contract or without any liability to extend the time or times for delivery by a period equivalent to that during which such delivery has been prevented.
12. **PROPER LAW**
- The contract and these terms shall be governed by English law and the purchaser shall submit to the sole jurisdiction of the English Courts.

GUARANTEE

All VADO products come with a 2 year guarantee as standard. Within this guarantee period VADO will provide replacement parts and any labour [SEE NOTE 1] needed to complete the product repair.

This standard guarantee may be extended by registering your product to give up to a 12 year guarantee period. Once registered:

VADO chromed brassware and stainless steel products have a 12 year guarantee (2 years parts and labour plus 10 years parts only).

VADO Sensori Smart Touch and Smart Dial products have a 5 year guarantee (parts and labour).

VADO Identity and i-tech products have a 5 year guarantee (2 year parts and labour plus 3 years parts only).

All other VADO products have a 3 year guarantee (2 years parts and labour plus 1 year parts only) [SEE NOTE 2].

VADO electric showers have a 2 years parts and labour guarantee.

GUARANTEE CONDITIONS

Our products are guaranteed against manufacturing defects from the date of purchase until the expiry of the relevant guarantee period shown above.

The guarantee is only valid if:

1. The product has been installed, used and maintained (maintenance guidelines can be viewed here) in accordance with VADO's instructions and subjected to normal use only.
2. The defect is not due to use of an unsuitable or inadequate water or power supply.
3. The defect is not due to accident, misuse, neglect or incorrect/inappropriate repair (other than by VADO or VADO authorised agents) or damage caused by foreign objects or substances.

4. The extended guarantee is only available if you have completed the Guarantee Registration Process. This can be done via the VADO website or via phone to our aftersales team.

Registration must be completed within 6 months from date of purchase. Under the extended guarantee period VADO will, at its option, offer to supply any replacement product (or component part) assessed to be defective [SEE NOTE 3].

The guarantee (whether standard or extended) is non-transferable to any subsequent owner.

All claims under the guarantee should be notified in the first instance to our Aftersales department, contact details below, this must be done no later than the last day of the relevant guarantee period. All claims must be accompanied by proof of purchase (sales receipt or delivery note) from an official VADO dealer.

The guarantee does not extend to any consequential loss or damage.

After repair or replacement, the relevant guarantee period will be calculated from the original date of purchase.

VADO operates a policy of continuous product development and therefore reserves the right to change the product, packaging and documentation specifications without notice.

NOTES:

[1] Labour via our engineer network is only available in the UK. Attendance by a VADO engineer or sub-contract engineer will be under our standard terms and conditions.

[2] VADO spare parts and shower hoses are under a parts only guarantee.

[3] VADO reserves the right to charge in advance for a product (or replacement part) pending collection and investigation (at VADO expense) to confirm a defect is due to a manufacturing issue. If a defect is found the charge will be refunded or cancelled. This guarantee is in addition to and does not affect your statutory rights as a consumer.

CLAIMS: Tel: 01934 745163 Email: aftersales@vado.com	GUARANTEE REGISTRATION: Tel: 01934 315699 Email: guarantee@vado.com
---	--

WHERE INSPIRATION FLOWS



VADO
Wedmore Road Cheddar Somerset England BS27 3EB
tel +44 (0)1934 745160
fax +44 (0)1934 745161
www.vado.com
export@vado.com

due to our policy of continual improvement, VADO reserve the right to change product specification.
the colours indicated are an approximation of the actual finishes on VADO products. e&oe.
©2018 VADO LIT-VADO/EXPO-SHWR19

