
SPECIFICATION SHEET

COLLECTION: VICTORIANA

PRODUCT CODE: AX-VIC-121/R/CD-CP



DESCRIPTION:

exposed bath shower mixer
with rigid riser kit
wall mounted
with water flow straightener
cold ceramic cartridge C-201-RTC
hot ceramic cartridge C-201-LTC
1/2" x 3/4" x 40mm eccentric threaded connections
3/4" threaded outlet for rigid riser
minimum operating pressure 0.2 bar LP

FINISH:

Chrome

MINIMUM OPERATING PRESSURE:

0.2 bar LP

tel: 01934 744466
email: sales@vado.com
www.vado.com

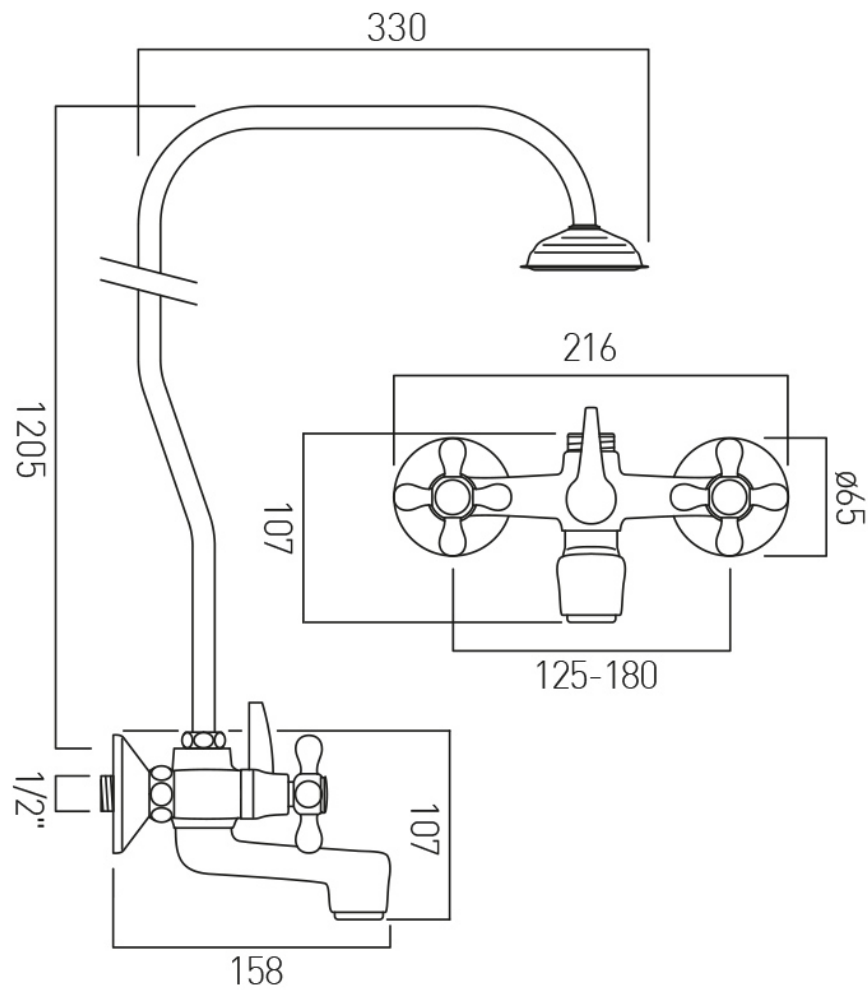
where inspiration flows
taps | showering | accessories



TECHNICAL DRAWING

COLLECTION: VICTORIANA

PRODUCT CODE: AX-VIC-121/R/CD-CP



tel: 01934 744466
email: sales@vado.com
www.vado.com

where inspiration flows
taps | showering | accessories

