

This installation guide covers model:

ARR-100E/SB-CP

ARRONDI™

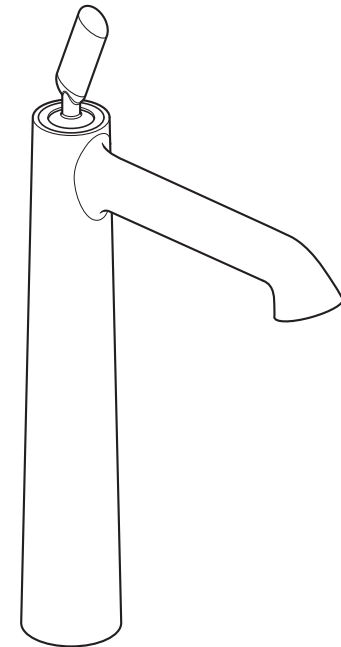
Extended mono basin mixer

Installation Guide

ARR-100E/SB-CP



WHERE
INSPIRATION
FLOWS



VADO
Wedmore Road Cheddar Somerset England BS27 3EB
tel 01934 744466
fax 01934 744345
www.vado.com
sales@vado.com

Version 1, 1-4-22

CONRAN AND
PARTNERS



Important - Please Read

Please read these instructions carefully before starting installation and keep for future reference.

Remove all packaging and check the product for missing parts or damage before starting installation.

Any alterations made to this product and fittings may infringe water regulations and will invalidate the guarantee.

The installation must comply with all Local/National Water Supply Authority Regulations/Byelaws and Building and Plumbing Regulations.
To be installed in accordance with BS EN806.

We strongly recommend that you use a qualified and registered plumber.

General Installation

This fitting is a mixing device and therefore water supplies should be reasonably balanced.

When installed, the fitting must comply with the requirements of the Water Supply (Water Fittings) Regulations 1999 and Scottish Byelaws 2004.

For further information, contact the Water Regulations department of your local water supplier (see the WRAS website www.wras.co.uk for details) or the Water Regulations Advisory Scheme by email (info@wras.co.uk) or telephone: 01495848454.

Before making any inlet pipe connections, all supply pipes MUST be thoroughly flushed to remove debris. Failure to do so could result in damage or low flow from the mixer unit. Water Supply (Water Fittings) Regulations 1999 Schedule 2 Section 13.

The fitting of isolating valves to the inlet feeds is advised for ease of maintenance.

Please take great care when installing this mixer not to damage its surface.

Please note if installing in an enclosed environment, access should be left for servicing and maintenance. No costs relating to inadequate access can be accepted.

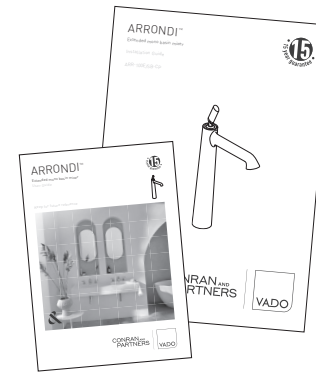
Operating Specifications

Operating Pressure

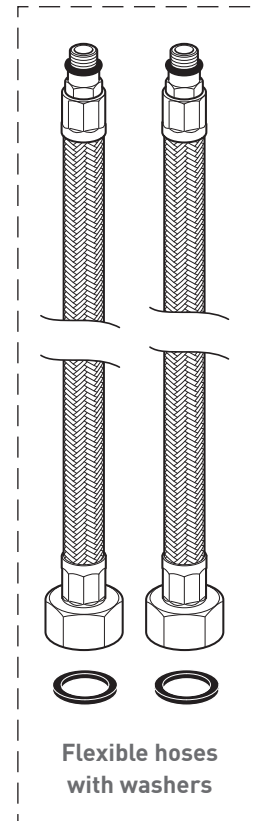
Minimum operating pressure **1 bar**

Maximum operating pressure **5 bar**

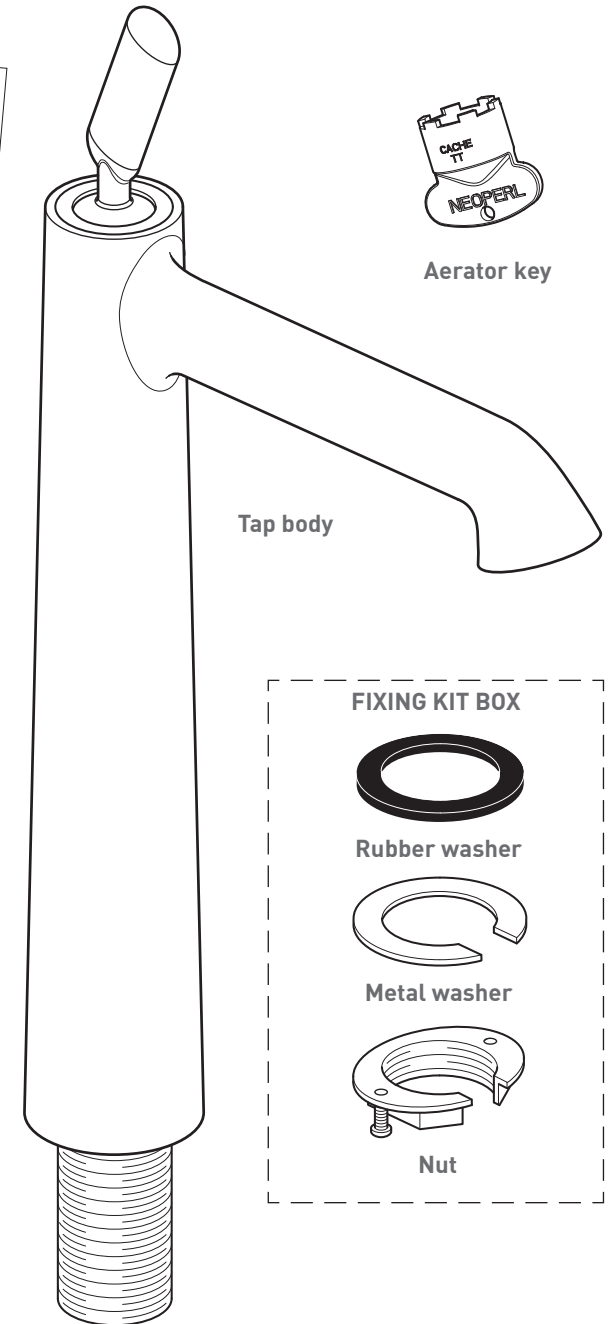
Contents of Packaging



Installation guide &
User manual



Flexible hoses
with washers



Aerator key

Tap body

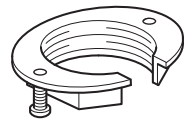
FIXING KIT BOX



Rubber washer

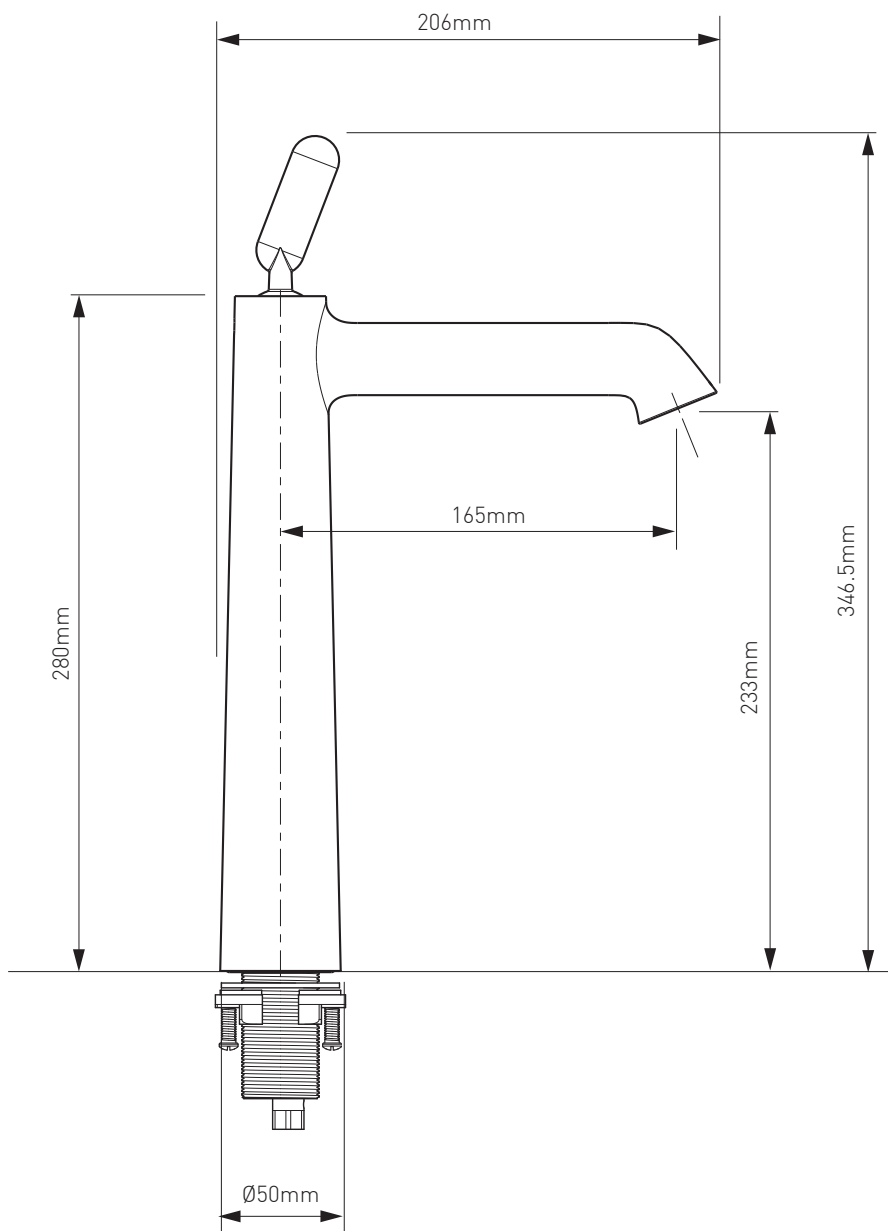


Metal washer

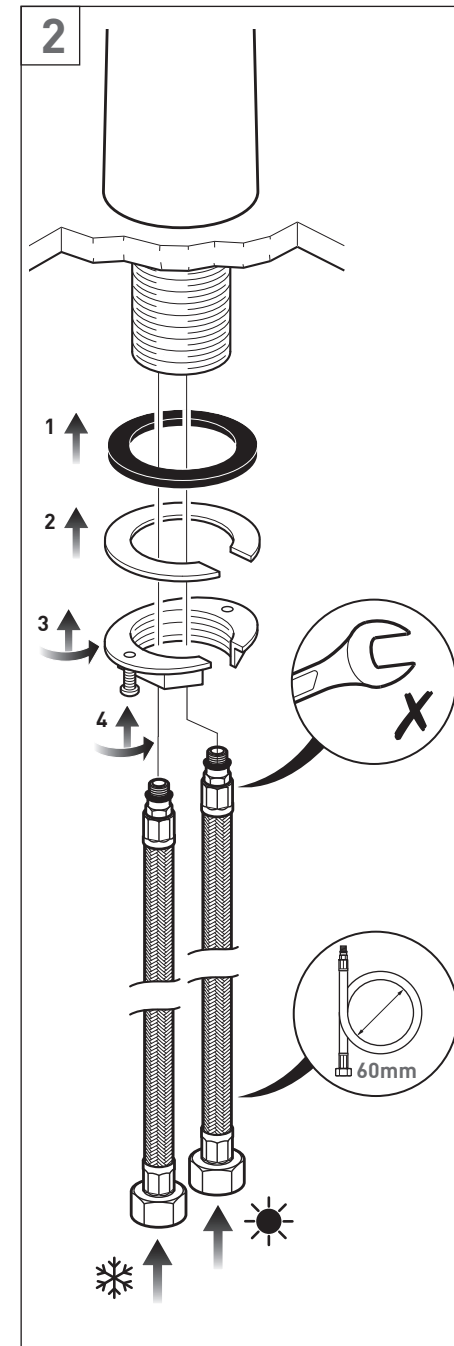
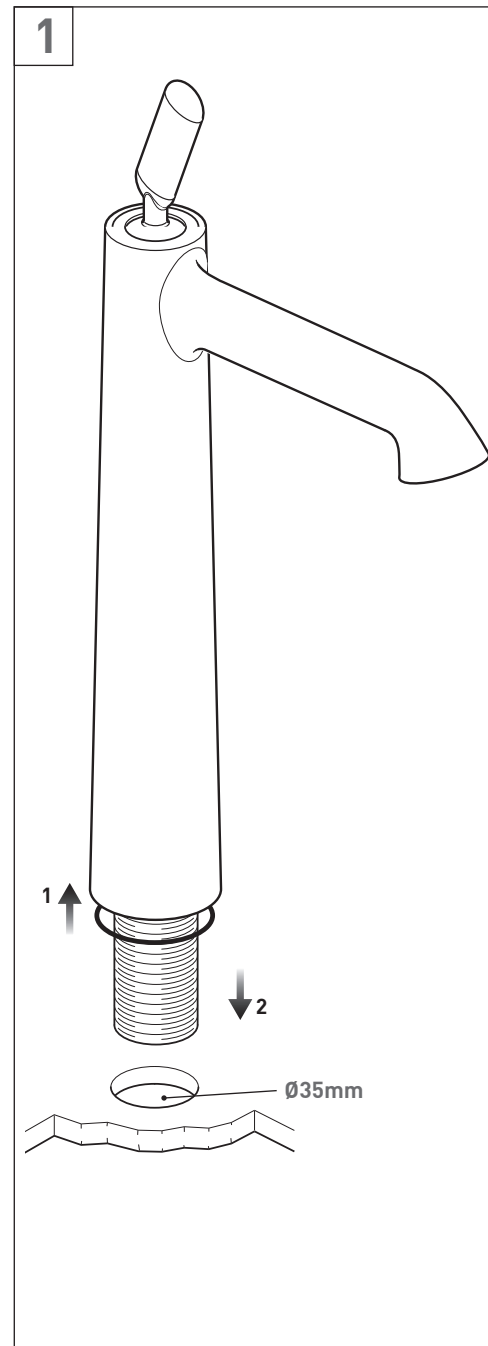


Nut

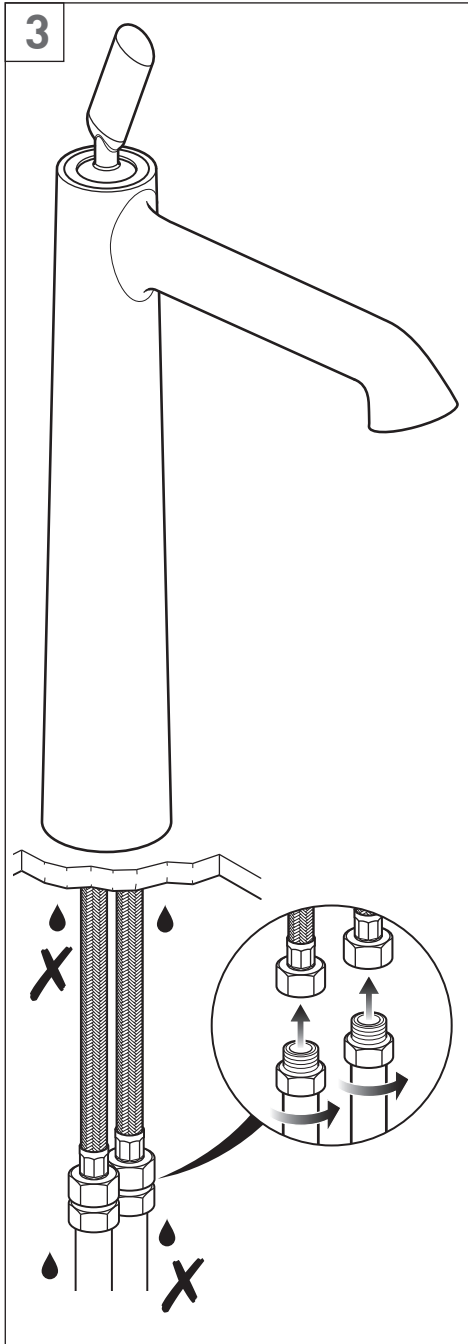
Dimensions



Installation - Quick Guide



Installation - Quick Guide



6

Installation

Before installing your new mixer, flush through the pipework to ensure removal of debris, turn off the water supply.

Make sure the O-ring is in place on the underside of the body.

Position the mixer on the sink, make sure that the mixer is positioned correctly.

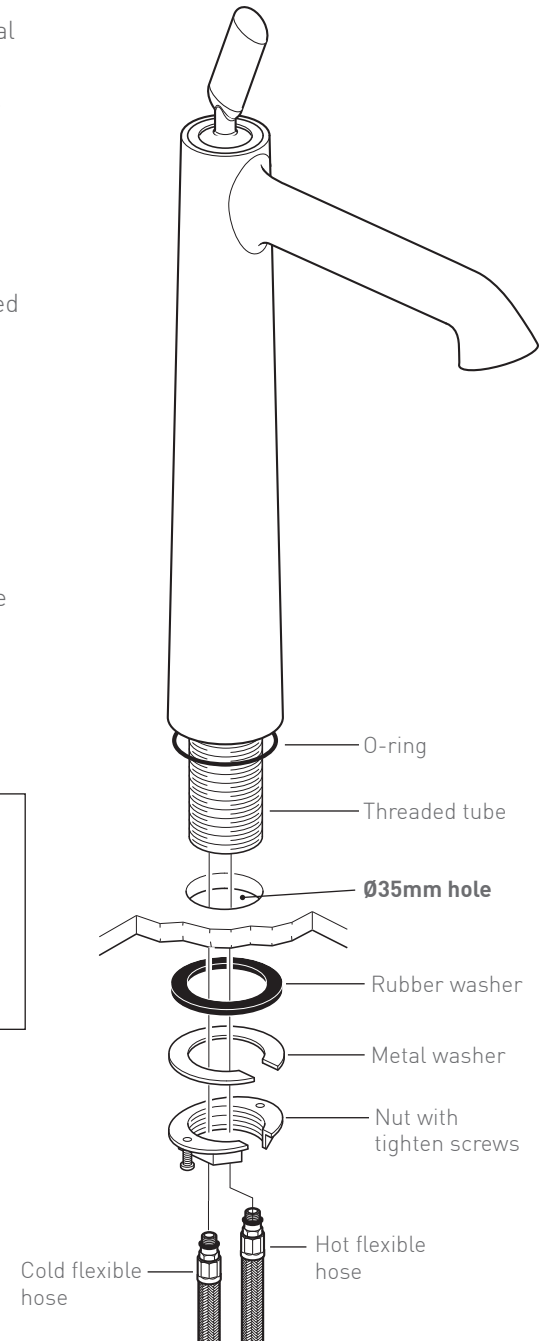
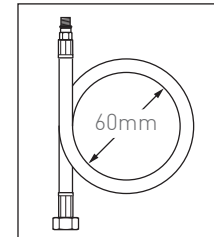
From the underside slide the rubber washer, metal washer over the threaded tube then screw on the nut until the screws touch the metal spacer. Tighten the screws to clamp the mixer to the sink.

CAUTION: Do not over tighten the screws as this may damage the sink.

Screw the two flexible pipes to the hot and cold connections in the threaded tube, the **cold** will be to the **left** and the **hot** to the **right, hand tighten only.**

Connect the water supply to the inlet pipes. The **cold** water should be connected to the **left** pipe and **hot** to the **right.**

CAUTION: When installing the flexible hoses **do not** kink, or bend them more than the 60mm diameter as shown right.



7